

*Light, God's eldest daughter,
is a principal beauty in a building.*
— Thomas Fuller

For as long as mankind has lived under roof, introducing natural light to the core of a dwelling has posed special challenges to both architect and builder. Even in today's highly technological 21st Century, sloped glazing is often viewed as a daunting task:

“HOW DO I DETAIL IT?”
“HOW DO I SPECIFY IT?”
“HOW DO I INSTALL IT?”

Renaissance is a recognized leader in the design, manufacture, installation and service of premium mahogany-and-glass conservatories for America's finest homes. Our extensive experience has enabled us to accumulate the technical knowledge and expertise, essential for overhead and specialty glazing success. With this Specifier's Guide, we are happy to share with you a few key guidelines illustrating how we methodically approach our craft.

As a custom job house, we are also keenly aware that most projects have their own special and often unique requirements. Therefore, this *Guide* serves as the first step of a collaborative discovery process to identify your clients' needs and expectations.

We invite you to call on us anytime for personalized one-on-one assistance. Telephone consultations are always without charge, and are the best way for us to get acquainted with your project, and for you to learn about Renaissance and how we can participate.

On behalf of the entire Renaissance Design Team, I look forward to hearing from you, and to the opportunity to add Light to your clients' Lifestyle.

Jason Sawyer

Jason Sawyer
President, Renaissance Conservatories

Begin here to learn about various geometrical shapes, and how they can be combined and integrated to fit your needs.

1
DESIGN GUIDELINES

Learn about some of the materials that go into our products.

2
SELECTIONS

Use our Standard General Specifications, or tell us exactly what you want.

3
SPECIFICATIONS

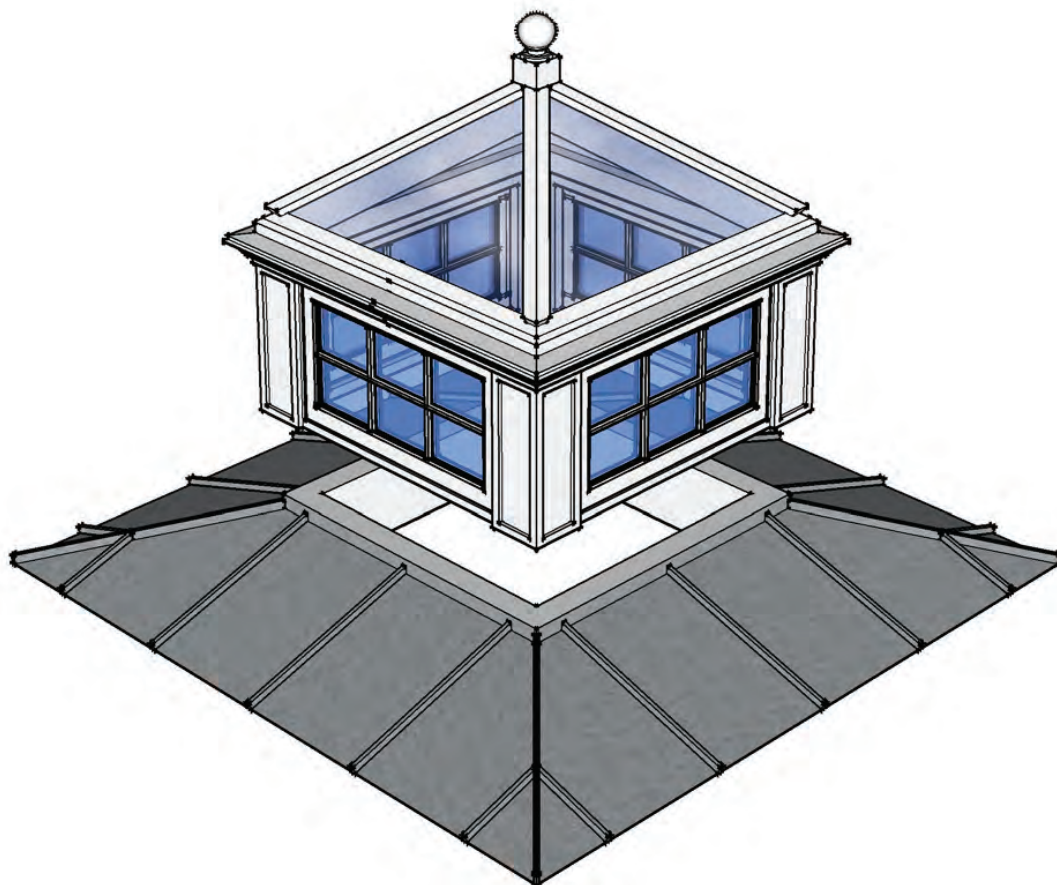
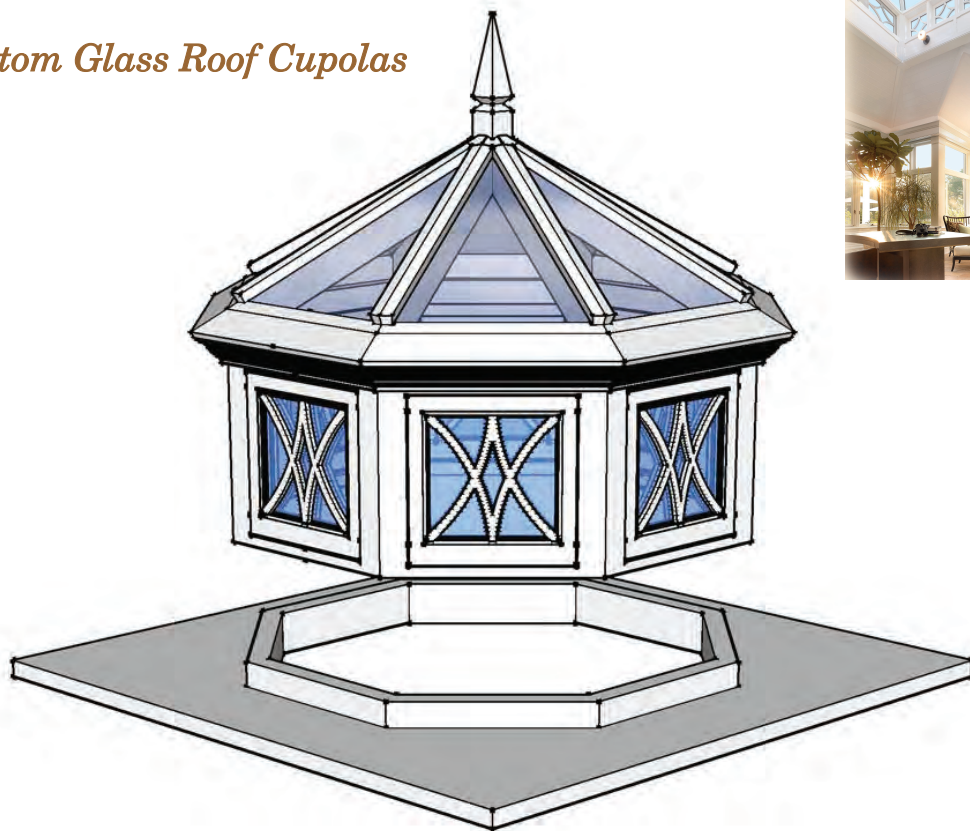
We have illustrated a few of our most often used details. We will create the exact detail you need.

4
DETAILS

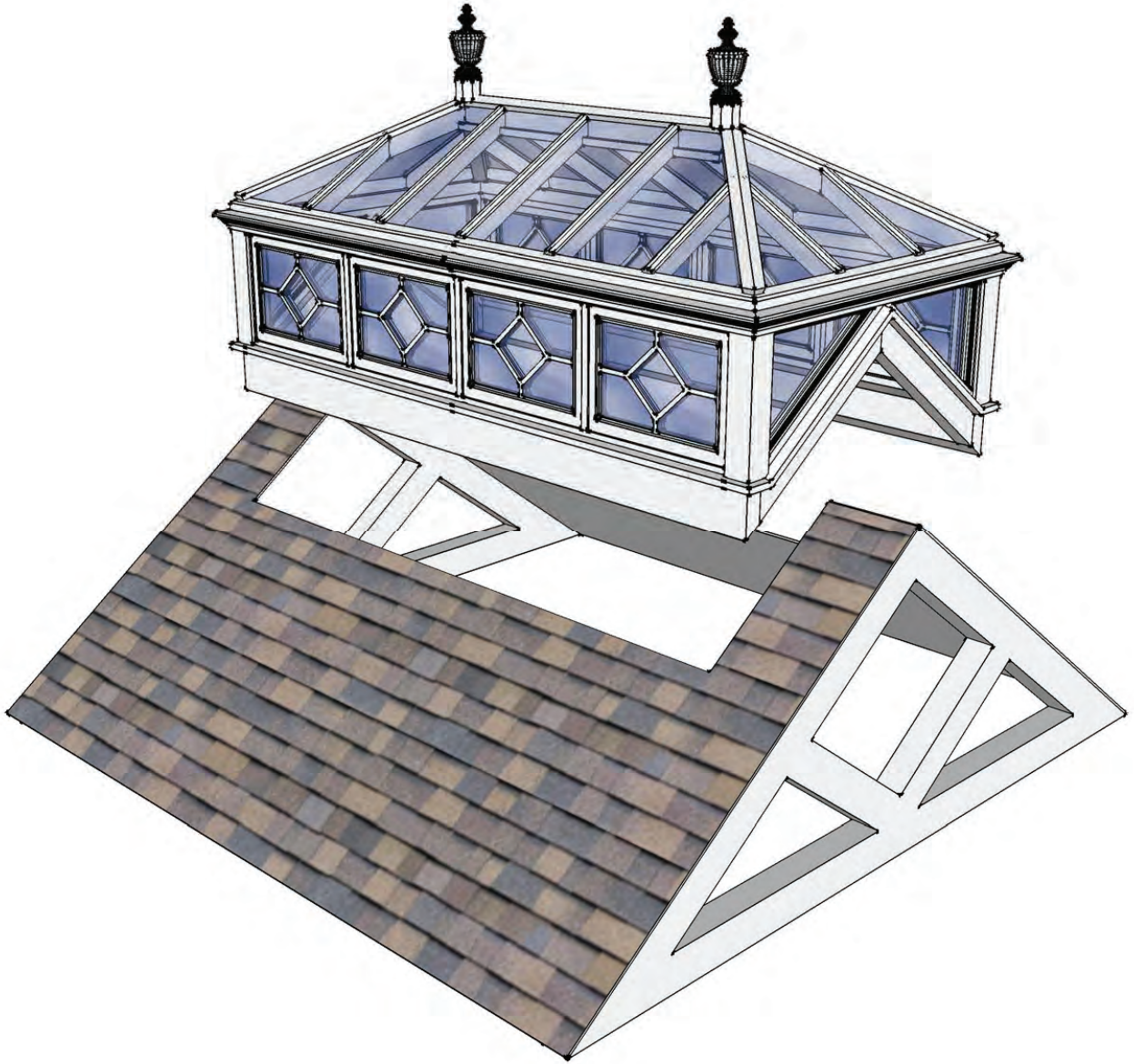
We believe ours is one of the strongest in the industry.

5
WARRANTY

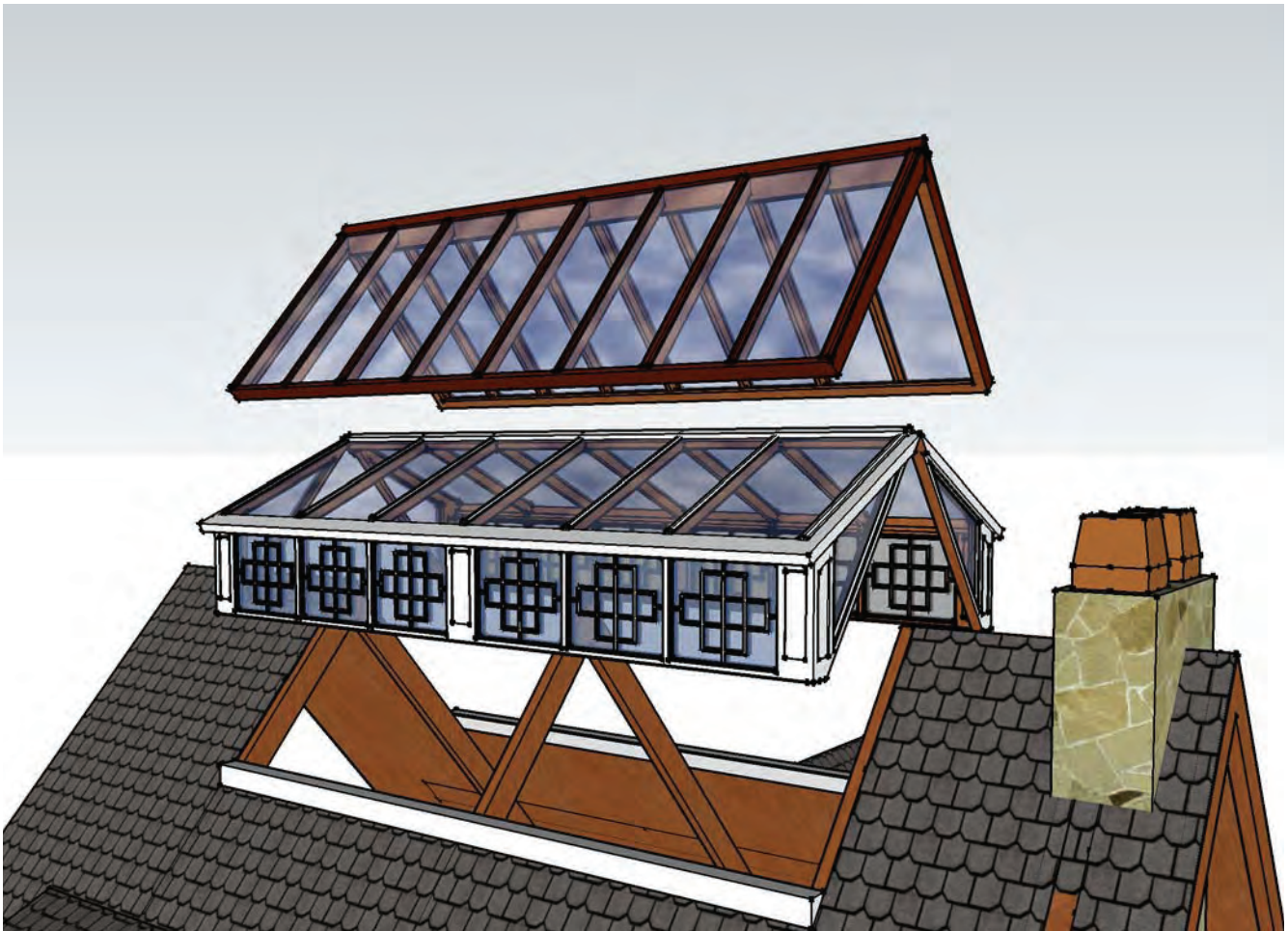
Custom Glass Roof Cupolas



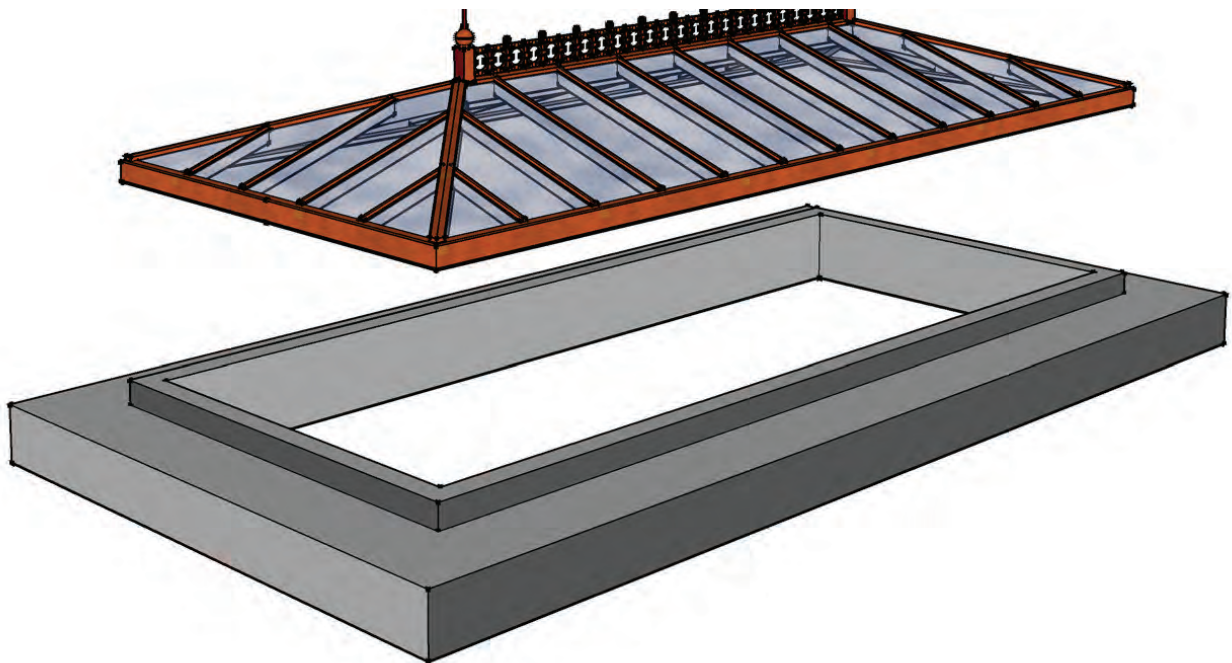
Even-Span Glass Lanterns



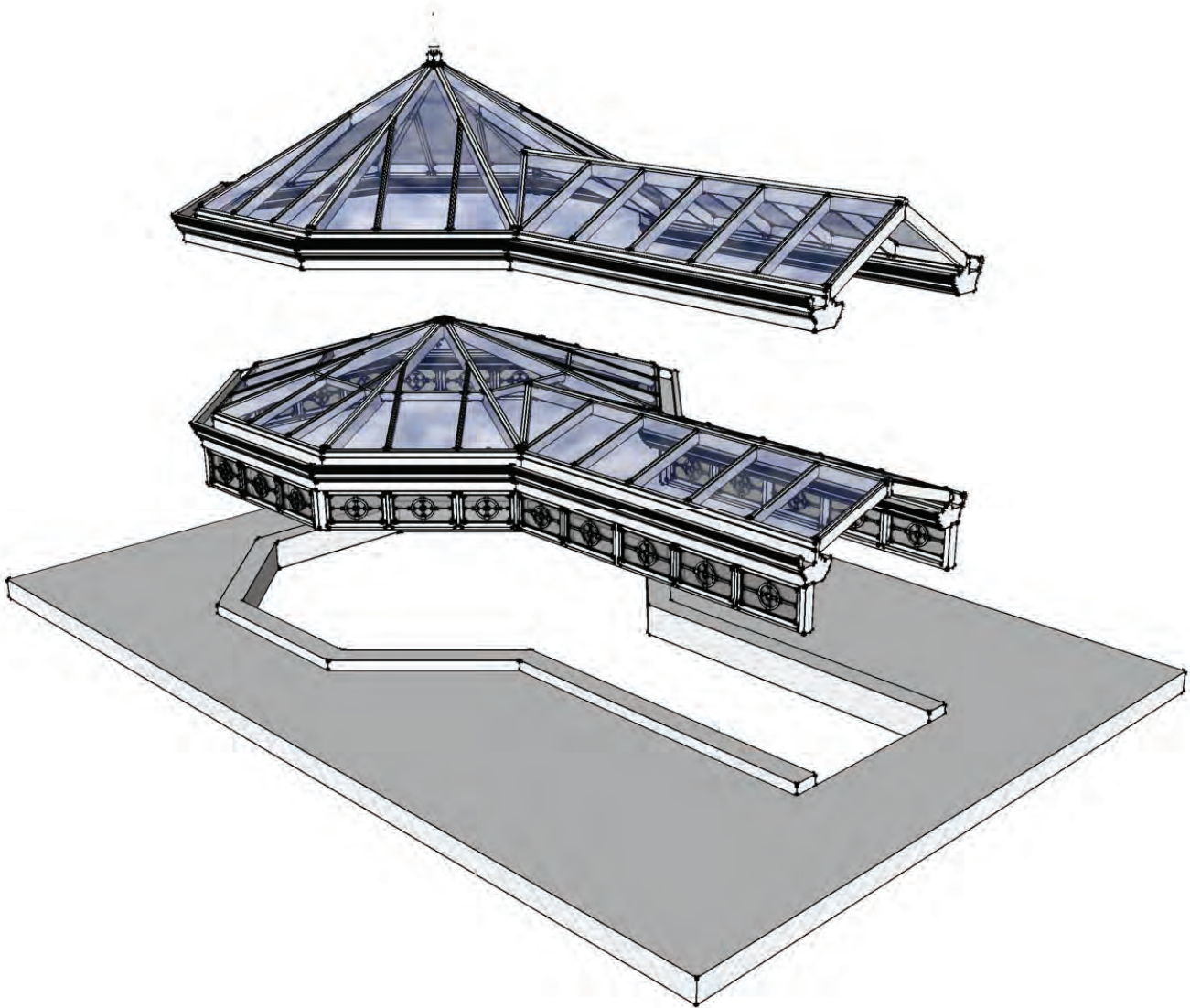
Ridge-Mounted Glass Cupolas

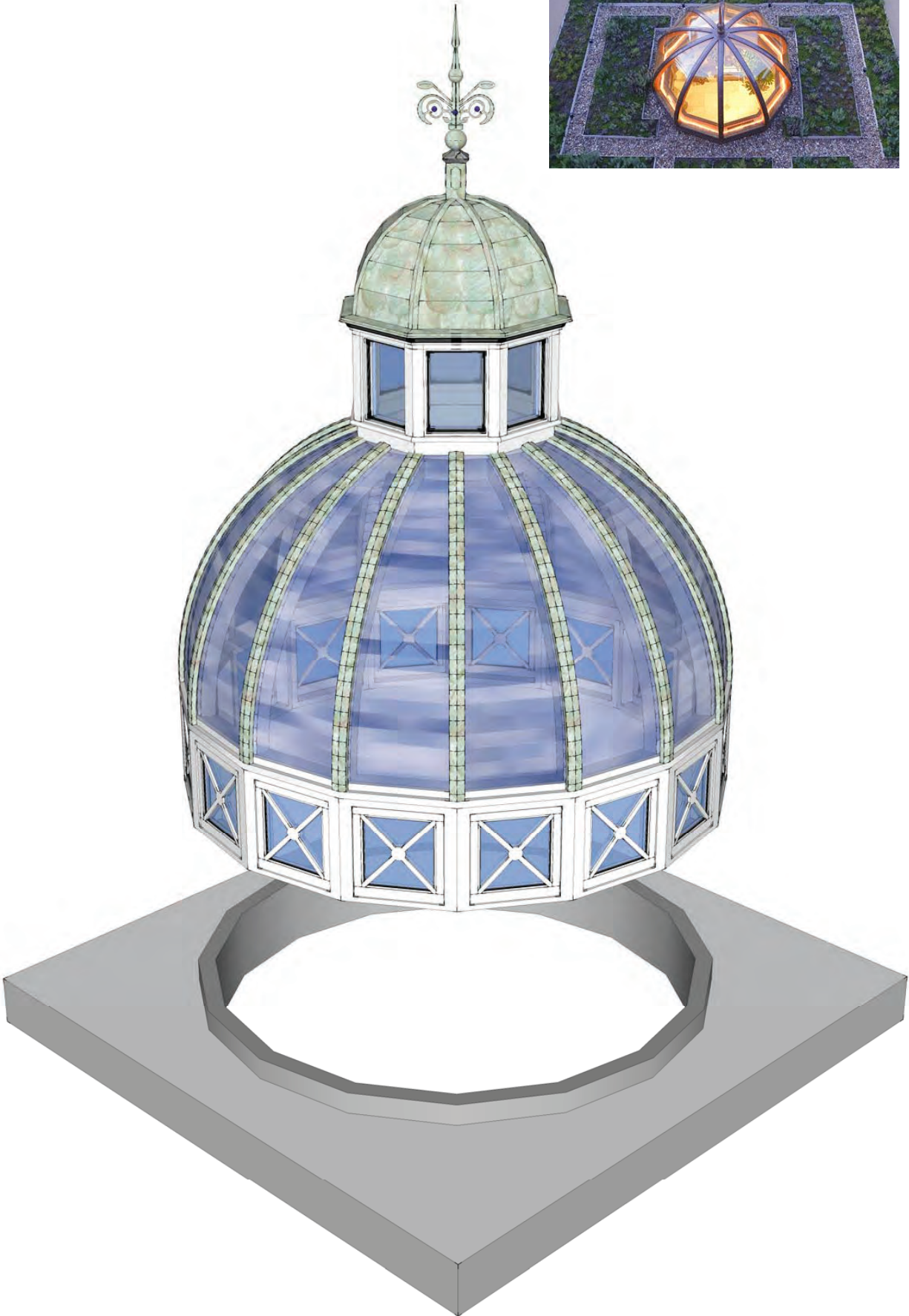


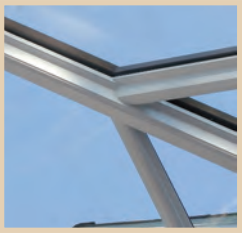
Metal-Clad Hipped Skylights



Custom Designed Glass Roofs







Fine Under Rafter Edge Profile Selections

A

SELECT THIS STYLE



B

SELECT THIS STYLE



C

SELECT THIS STYLE



D

SELECT THIS STYLE



E

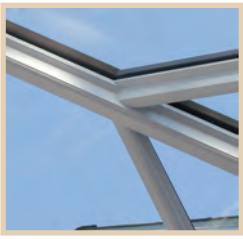
SELECT THIS STYLE



F

SELECT THIS STYLE





Fine Under Rafter Edge Profile Selections

Custom Colors Available Upon Request.



A

SELECT THIS STYLE



B

SELECT THIS STYLE



C

SELECT THIS STYLE



D

SELECT THIS STYLE



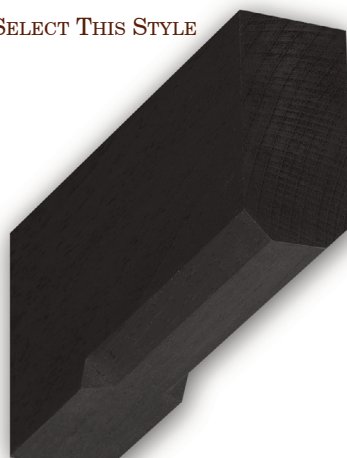
E

SELECT THIS STYLE



F

SELECT THIS STYLE



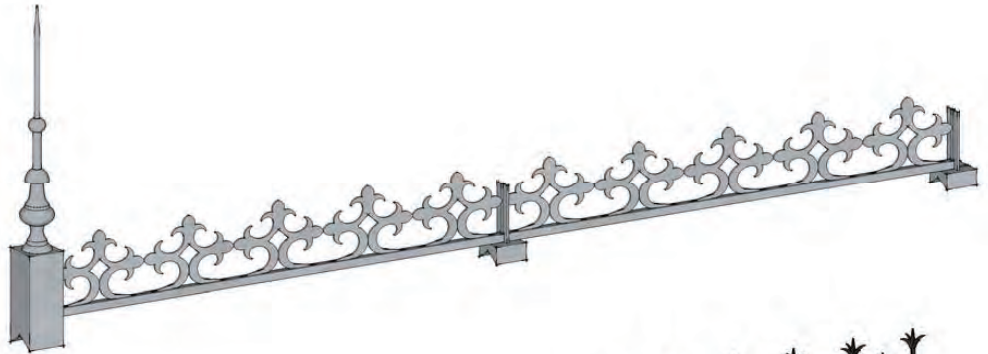


Finial and Cresting Suggestions*

SELECT THIS STYLE

FLEUR DE LIS

In Lead-coated Copper



SELECT THIS STYLE

GOTHIC SPIRE

In Black Aluminum



SELECT THIS STYLE

QUADRAPHILE

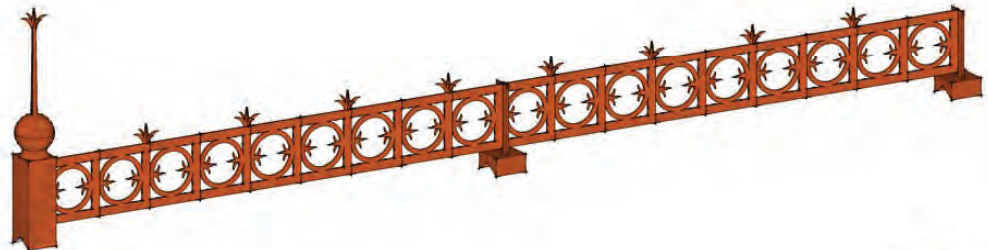
In White Aluminum



SELECT THIS STYLE

BALL & SPIRE

In Copper



SELECT THIS STYLE

LOW VICTORIAN

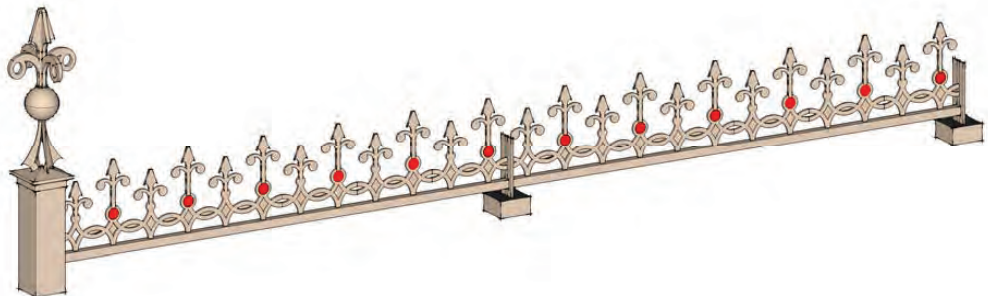
In Green Aluminum



SELECT THIS STYLE

HIGH VICTORIAN

In Tan Aluminum with Red Flash Glass Inserts



* Call us for a design to meet your special needs.



STANDARD GENERAL SPECIFICATIONS
Lanterns, Skylights, Glass Roofs, Domes & Dormers
(Effective 01/01/2017)

- 1. Drawing:** The Manufacturer to submit shop drawings for approval prior to the start of fabrication.
- 2. Manufacturer:** Drawings and contract documents to be based on products manufactured or supplied by Renaissance Conservatories, 132 Ashmore Drive, Leola, Pennsylvania 17540, toll-free phone (800) 882-4657, phone (717) 661-7520, website www.RenaissanceConservatories.com
- 3. Framing Species:** Exposed framing to be kiln-dried [choose one] [Spanish Cedar (*Cedrela Odorata*), Genuine Mahogany (*Swietenia Macrophylla*), Western Red Cedar (*Thuja Plicata*), White Oak (*Quercus Spp*)]. Some concealed blocking or concealed structural framing may be SPF (Spruce, Pine, Fir), steel, or engineered lumber.
- 4. Doors:** Doors and Screen/Storm Doors to be pre-hung by the manufacturer in full depth jambs. Doors to be custom-sized per shop drawings. In-swing door thresholds to be adjustable type, [choose one] [mill finish, dark bronze] aluminum with oak rail and interior nosing, as manufactured by Imperial Products. Out-swing doors to have non-removable pin hinges and fixed out-swing thresholds, [choose one] [mill finish, dark bronze] aluminum with an interior oak stop and nosing as manufactured by Imperial Products.

Prime Door hardware to include 1-1/2 pair 4" x 4" solid brass hinges (finish to match lock trims). Single prime door locking to be Sentry 3-Point Lever Locking System, as manufactured by Truth/Amesbury. Paired prime door locking to be 5-Point. Truth Lever and Escutcheon style to be [choose one] (Transitional, Contemporary, Modern, Traditional, Classic). Truth lock trim finish to be [choose one] (Antique Brass, PVD Brushed Chrome, PVD Chrome, PVD Brass, PVD Bronze, PVD Nickel, White, Beige, Faux Bronze, Black). Custom lock trim compatible with Truth lock sets, such as manufactured by Rocky Mountain Hardware, can be specified.

Screen/Storm Doors to be hand-selected kiln-dried 1-3/8" solid laminated lumber to match framing species. Screen/Storm Door style to be [choose one] (authentic floating raised panel, full view) or as otherwise specified, with interchangeable aluminum-framed screen/storm panels. Joinery to be glued mortise and tenon with manufacturer's proprietary blind locking pin(s).

Screen/Storm Door hardware to include 1-1/2 pair 3-1/2" x 3-1/2" solid brass hinges and surface-mounted solid brass Model SCL82 latch (with privacy feature). Lock trim finish to complement selected prime door lock trim finish.

- 5. Sash:** All operating and fixed sash to be direct-set into framing openings (without jambs), and to be custom-sized as specified.

Sash to be hand selected kiln-dried 1-3/4" x 1-5/8" with a 2-3/16" bottom rail solid laminated lumber to match framing species. Joinery to be glued mortise and tenon and pinned.

Casement hardware to have a [choose one] (03-Bronze, 23-Chestnut Bronze, 24-Beige, 32-White) finish and to include surface-mounted single arm roto gear operator, concealed hinges, and matching sash locks as manufactured by Truth Hardware.

Awning hardware to have a [choose one] (03-Bronze, 23-Chestnut Bronze, 24-Beige, 32-White) finish and to include surface-mounted single arm roto gear operator, concealed hinges and matching sash locks as manufactured by Truth Hardware.

Motorized Sash: Motor drives to be Marvel Power Window System as manufactured by Truth Hardware in [choose one] (03-Bronze, 38-White) cover finish.

6. **Operating Roof Vents:** Roof vents to be hand selected kiln-dried 1-3/4" (or as otherwise specified) laminated solid lumber to match framing species. Vents to be exterior clad in [choose one] (copper, lead coated copper, aluminum) in a finish as specified. Vents to be completely removable from base and to be [choose one] (manually operated, motorized) on a continuous ball hinge with removable insect screens.

Motorized Roof Vents: Motor drives for vents weighing up to 90 pounds to be Marvel Power Window System as manufactured by Truth Hardware with [choose one] (03-Bronze, 38-White) finish. Motor drives for vents weighing in excess of 90 pounds to be Sentry II HS Motor System as manufactured by Truth Hardware with [choose one] (03-Bronze, 38-White) finish.

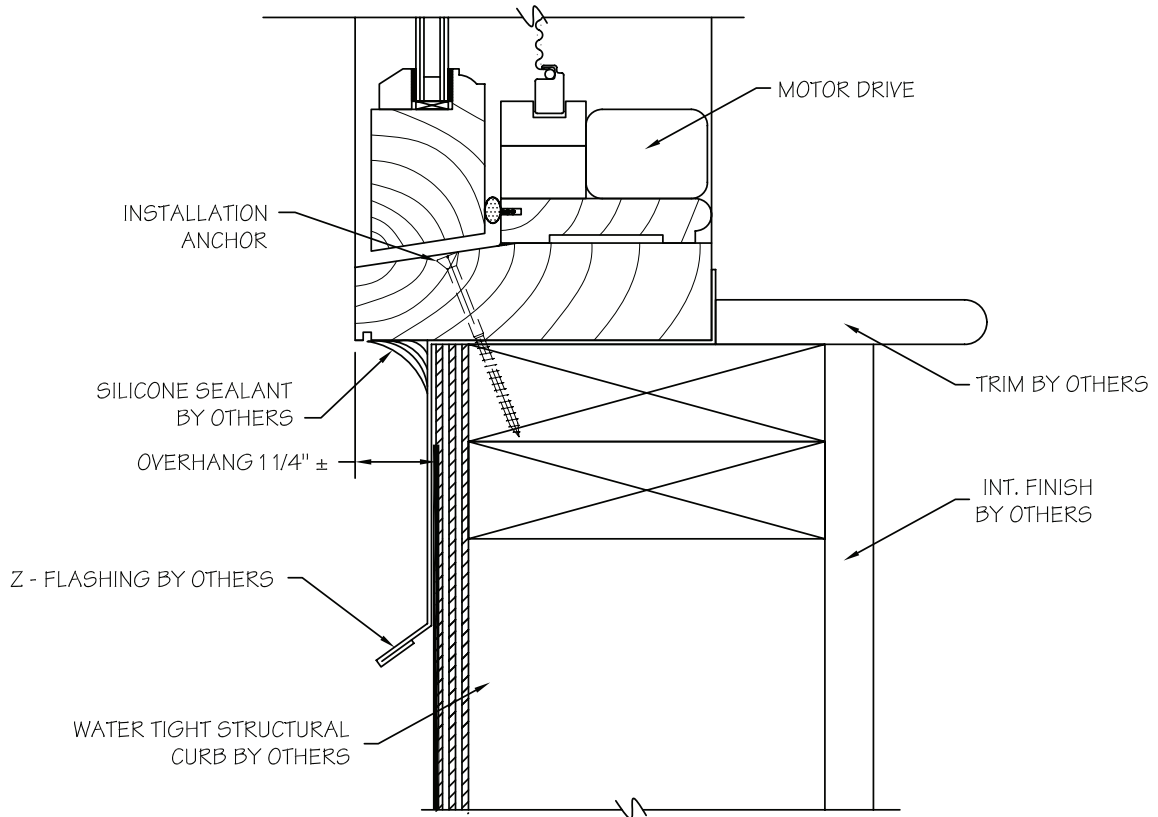
7. **Glass:** All insulating glass to be double insulating dual seal with a butyl primary seal and a neutral-cure silicone secondary seal. Vertical glass to be clear insulating glass, annealed or tempered as specified. Roof glass to be clear insulating glass, tempered outboard lite, laminated inboard lite, or as otherwise specified. Custom tints, high performance coatings, inert gas fills and captured air spacers as specified.
8. **Rigid Insect Screens:** Screen cloth to be charcoal vinyl coated fiberglass. Frames to be aluminum with [choose one] (bronze, white, beige) baked enamel painted finish, or custom powder coated as specified.
9. **Fasteners:** The Manufacturer to provide all fasteners necessary for unit assembly and glazing. Exposed fasteners to be brass or stainless steel.
10. **Cresting & Finial Posts:** [Choose one] (Copper, aluminum, wood) from standard offerings or custom as specified.
11. **Applicés, Trims & Architectural Detailing:** From standard offerings or custom as specified.
12. **Art Glass:** Custom as specified.
13. **Structural Components:** Structural steel to be concealed and prime painted or finished as otherwise specified.
- Tension rod collar ties to be prime painted or finished as otherwise specified.
14. **Roof Caps:** Caps to be manufacturer's proprietary manufacturer's [choose one] (copper-wrapped, lead coated copper-wrapped, aluminum-wrapped) wood caps in a finish as specified.
15. **Eaves Detailing:** When specified, the exterior eaves to have an integrated rain gutter in [choose one] (aluminum, copper, lead-coated copper) in a finish as specified.
16. **Flashing and Brake Metals:** Supplied Flashing and Brake Metals to be [choose one] (bronze, white, custom color) baked enamel painted or powder coated aluminum, or [choose one] (copper, lead-coated copper).
17. **Glazing Tapes:** Supplied glazing tapes to be black preformed cellular type, consisting of a flexible closed cell polyolefin foam substrate with a high performance pressure sensitive acrylic adhesive system on both sides.
18. **Sealants:** Supplied sealants to be one-part low modulus neutral cure silicone.
19. **Finish:** All interior and/or exterior exposed wood surfaces to be factory primed with one (1) coat of {select one} Lclear-natural wood preservative or Sealgrip Interior/Exterior acrylic primer/sealer.} All surfaces to be factory backside primed prior to component assembly.



RENAISSANCE CONSERVATORIES GLASS PERFORMANCE FOR TYPICAL GLAZING COMBINATIONS

Manufacturer	Product Trade Name (Coated Surface No.)	Type of Low E Coating	Substrate Outboard/ Inboard	Visible light		Ultraviolet		Solar		U-Factor / U-Value (Imperial)				Shading Coef- ficient	Solar Heat Gain Coef- ficient	Relative Heat Gain	Light to Solar Gain (LSG)
				Trans %	Reflectance Outside %	Trans %	Trans %	Reflectance Outside %	Winter Night-time Air Fill	Winter Night-time Argon Fill	Summer Daytime Air Fill	Summer Daytime Argon Fill					
ROOF GLASS All performance figures are approximate. (* Inboard lite is clear laminated glass)																	
	Clear (non coated)		Clear/Clear*	79	15	15	<1	56	11	0.46	0.44	0.49	0.47	0.79	0.68	165	1.16
PPG	Sungate 500 Low-E (#2)	Hard	Clear/Clear*	73	16	17	<1	49	13	0.34	0.30	0.34	0.30	0.70	0.61	145	1.20
PPG	Sungate 500 Low-E (#2 & #3)	Hard	Clear/Clear*	68	18	18	<1	44	15	0.32	0.27	0.31	0.26	0.67	0.58	139	1.17
Guardian	SunGuard SuperNeutral 68 Low-E (#2)	Soft	Clear/Clear*	67	11	12	<1	31	32	0.29	0.24	0.27	0.22	0.43	0.37	90	1.80
Guardian	SunGuard SuperNeutral 68 Low-E (#2 & #3)	Soft	Clear/Clear*	56	9	8	<1	23	32	0.28	0.23	0.26	0.21	0.40	0.34	83	1.63
Guardian	SunGuard SuperNeutral 54 Low-E (#2)	Soft	Clear/Clear*	52	13	17	<1	21	33	0.28	0.23	0.27	0.22	0.32	0.28	67	1.86
Guardian	SunGuard SuperNeutral 54 Low-E (#2) + SN 68 (#3)	Soft	Clear/Clear*	44	12	12	<1	17	33	0.28	0.23	0.26	0.21	0.30	0.26	64	1.69
Guardian/PPG	SunGuard SuperNeutral 54 (#2) + Sungate 500 (#3)	Soft/Hard	Clear/Clear*	48	14	18	<1	19	34	0.28	0.23	0.27	0.22	0.31	0.27	65	1.78
Pilkington	Blue-Green Eclipse Adv. (#2)		Reflect/Clear*	51	21	29	<1	28	12	0.34	0.30	0.34	0.30	0.43	0.38	91	1.36
Pilkington	B-G Eclipse Adv. (#2) + Low-E (#3)	Hard	Reflect/Clear*	48	22	29	<1	25	13	0.31	0.26	0.31	0.27	0.41	0.35	86	1.36
Pilkington	B-G Eclipse Adv. (#2) + Low-E (#3)	Soft	Reflect/Clear*	42	20	0	<1	17	14	0.24	0.27	0.21	0.33	0.29	70	1.47	
PPG	Solarcool Bronze (#2)		Reflect/Clear*	19	14	37	<1	19	12	0.46	0.44	0.49	0.47	0.38	0.33	83	0.58
PPG	Solarcool Bronze (#2) + Low-E (#3)	Hard	Reflect/Clear*	18	14	36	<1	16	13	0.34	0.30	0.34	0.31	0.33	0.29	72	0.63
PPG	Solarcool Bronze (#2) + Low-E (#3)	Soft	Reflect/Clear*	15	14	25	<1	8	18	0.28	0.24	0.27	0.22	0.21	0.18	45	0.85
PPG	Solarcool Gray (#2)		Reflect/Clear*	16	11	37	<1	16	10	0.46	0.44	0.49	0.47	0.35	0.33	77	0.53
PPG	Solarcool Gray (#2) + Low-E (#3)	Hard	Reflect/Clear*	15	11	36	<1	13	10	0.34	0.30	0.34	0.31	0.30	0.26	65	0.58
PPG	Solarcool Gray (#2) + Low-E (#3)	Soft	Reflect/Clear*	14	11	29	<1	7	14	0.29	0.24	0.27	0.22	0.19	0.16	42	0.88
VERTICAL GLASS All performance figures are approximate.																	
	Clear (non coated)		Clear/Clear	79	15	15	50	61	12	0.47	0.45	0.50	0.48	0.81	0.70	169	1.13
PPG	Sungate 500 Low-E (#3)	Hard	Clear/Clear	74	17	17	42	52	15	0.35	0.31	0.35	0.31	0.76	0.66	156	1.12
PPG	Solarban 60 Low-E (#3)	Soft	Clear/Clear	70	12	11	19	33	31	0.29	0.24	0.27	0.22	0.52	0.45	107	1.56
Guardian	ClimaGuard 71/38 Low-E (#3)	Soft	Clear/Clear	71	10	12	-	36	37	0.40	-	-	-	0.46	0.40	98	-
Guardian	ClimaGuard 55/27 Low-E (#3)	Soft	Clear/Clear	55	12	17	-	24	37	0.40	-	0.41	-	0.34	0.30	73	-
PPG	SolarBronze Tint (outboard)		Tint/Clear	47	8	13	21	39	7	0.47	0.45	0.50	0.48	0.59	0.51	124	0.92
PPG	SolarGray Tint (outboard)		Tint/Clear	40	7	13	20	33	7	0.47	0.45	0.50	0.48	0.53	0.45	112	0.89
SINGLE GLAZED All performances are approximate.																	
	Clear (non coated)		Clear	89	9	9	66	77	7	1.02	NA	0.93	NA	0.94	0.82	201	1.09
	Clear Laminated (non coated)		Clear	88	8	8	<1	71	7	0.98	NA	0.89	NA	0.89	0.77	191	1.14
PPG	SolarBronze Tint		Tint	53	6	6	26	50	6	1.02	NA	0.93	NA	0.73	0.63	159	0.84
PPG	SolarGray Tint		Tint	44	6	6	24	42	5	1.02	NA	0.93	NA	0.67	0.58	147	0.76
Southwall	XIR Laminated 72-41		Clear	72	8	8	0.02	34	34	1.07	NA	NA	NA	0.48	0.41	110	NA
Southwall	XIR Laminated 72-41 (Low "E")	Hard	Clear	66	10	11	0.02	33	33	0.75	NA	NA	NA	0.41	0.35	92	NA
Southwall	XIR Laminated 72-41 (Bronze)		Tint	53	8	7	0.02	34	34	1.07	NA	NA	NA	0.41	0.35	97	NA
Southwall	XIR Laminated 72-41 (Gray)		Tint	48	7	7	0.02	32	32	1.07	NA	NA	NA	0.40	0.35	96	NA

Updated 11/19/2009



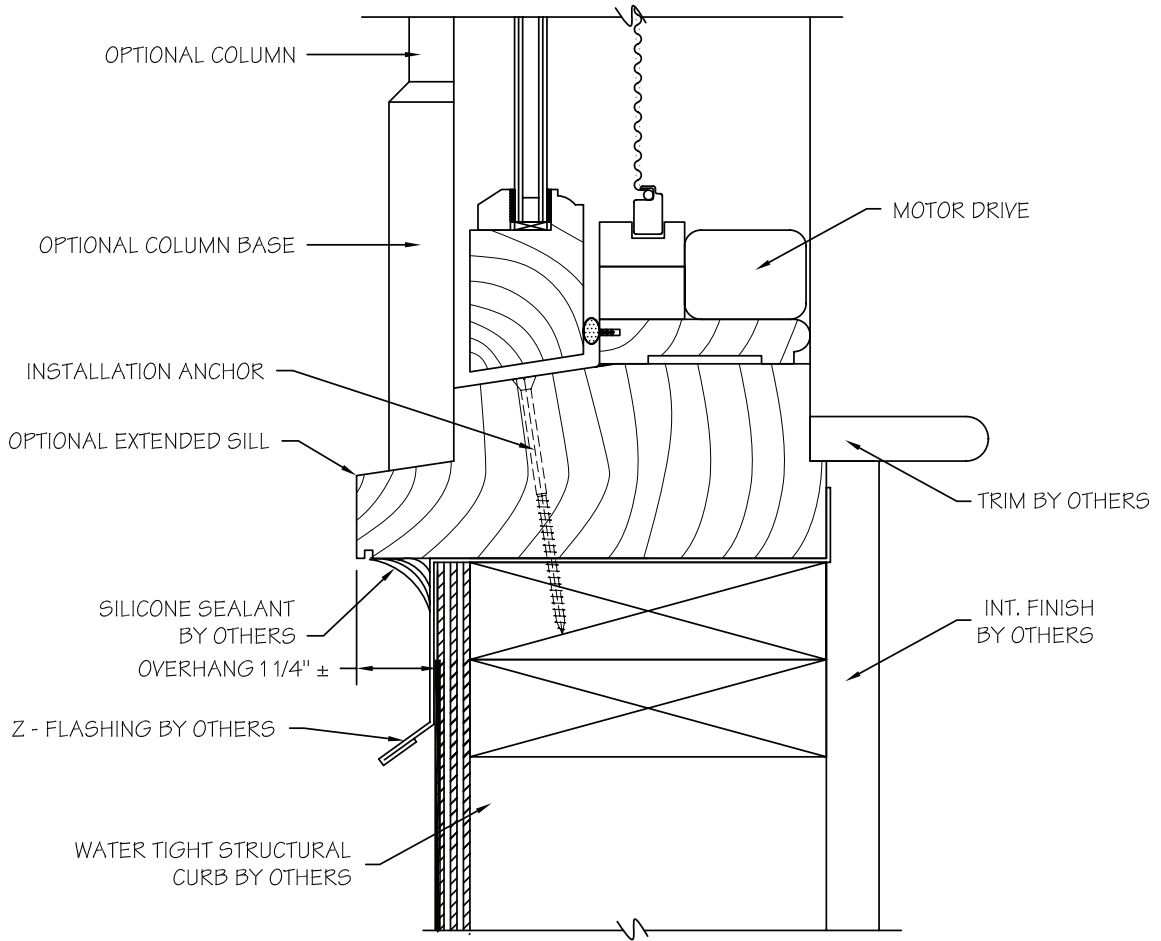
TYPICAL LANTERN CURB

DRAWINGS AND DIMENSIONS ARE
FOR ILLUSTRATION PURPOSES ONLY, AND ARE
NOT FOR CONSTRUCTION.



132 Ashmore Drive
Leola, Pennsylvania 17540
(717) 661-7520 Fax (717) 661-7727

Scale: NTS	Page#: L1
Revision Date: 8-1-09	
File Name: Lantern Curb 1	



**TYPICAL LANTERN CURB
WITH EXTENDED SILL**

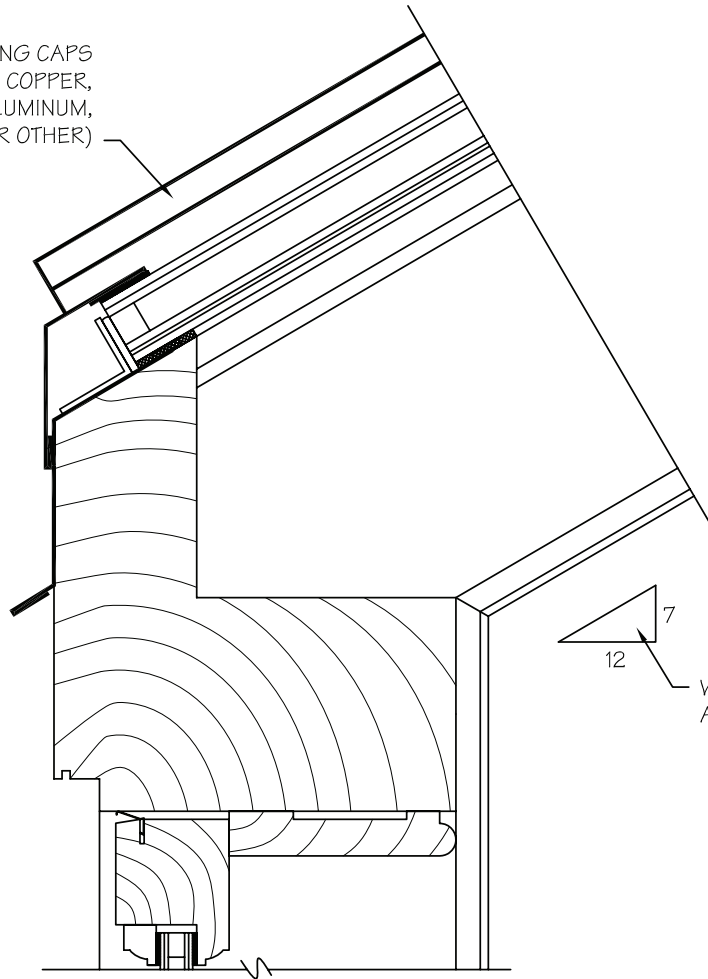
DRAWINGS AND DIMENSIONS ARE
FOR ILLUSTRATION PURPOSES ONLY, AND ARE
NOT FOR CONSTRUCTION.



132 Ashmore Drive
Leola, Pennsylvania 17540
(717) 661-7520 Fax (717) 661-7727

Scale: NTS	Page#: L2
Revision Date: 8-1-09	
File Name: Lantern Curb 2	

GLAZING CAPS
(COPPER, LEAD-COATED COPPER,
RHEINZINK, ALUMINUM,
STAINLESS STEEL, OR OTHER)



7
12
VARIABLE PITCH
AS REQUIRED

TYPICAL LANTERN EAVES

DRAWINGS AND DIMENSIONS ARE
FOR ILLUSTRATION PURPOSES ONLY, AND ARE
NOT FOR CONSTRUCTION.



132 Ashmore Drive
Leola, Pennsylvania 17540
(717) 661-7520 Fax (717) 661-7727

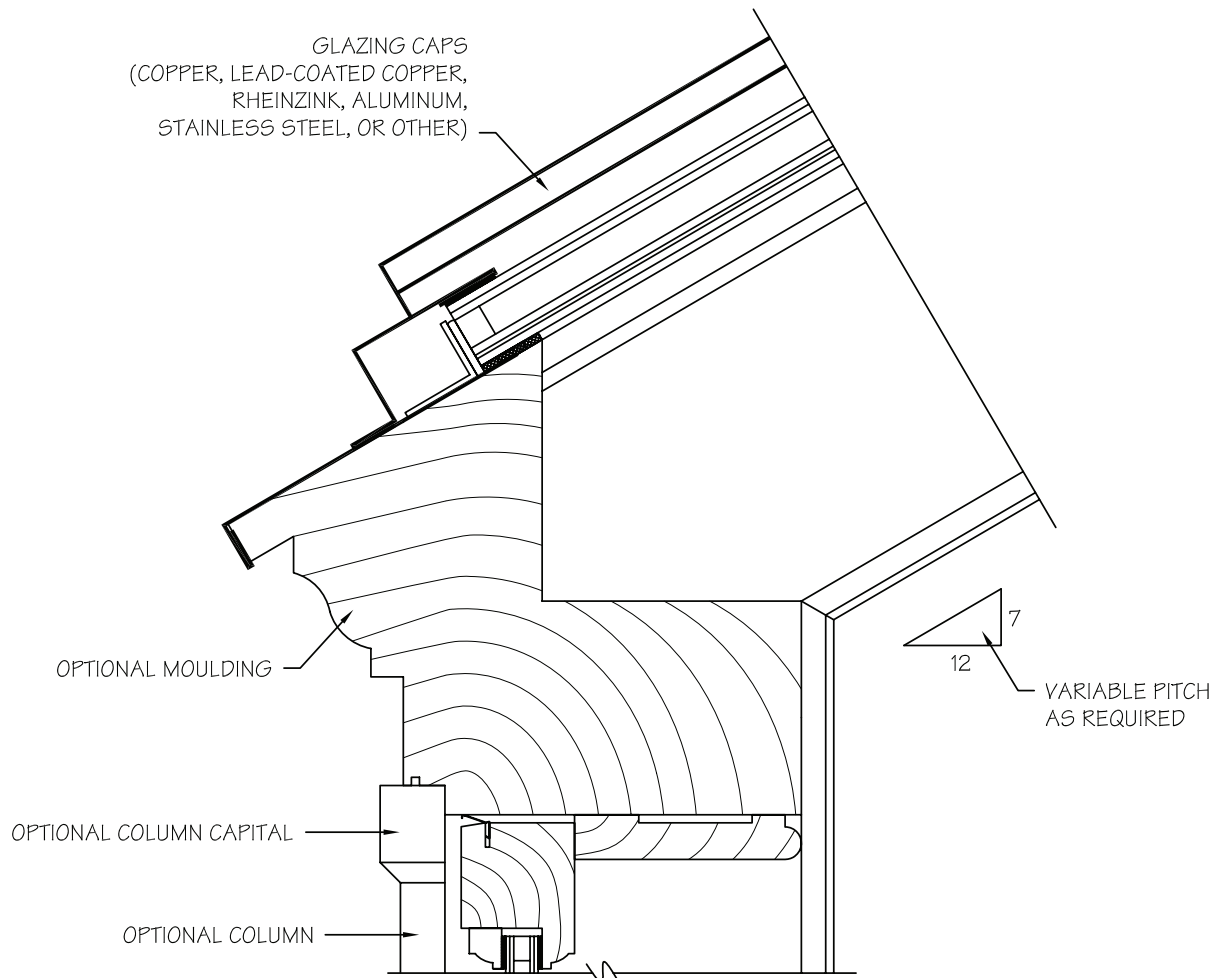
Scale: NTS

Page#:

Revision Date: 8-1-09

L3

File Name: Lantern Eaves 1



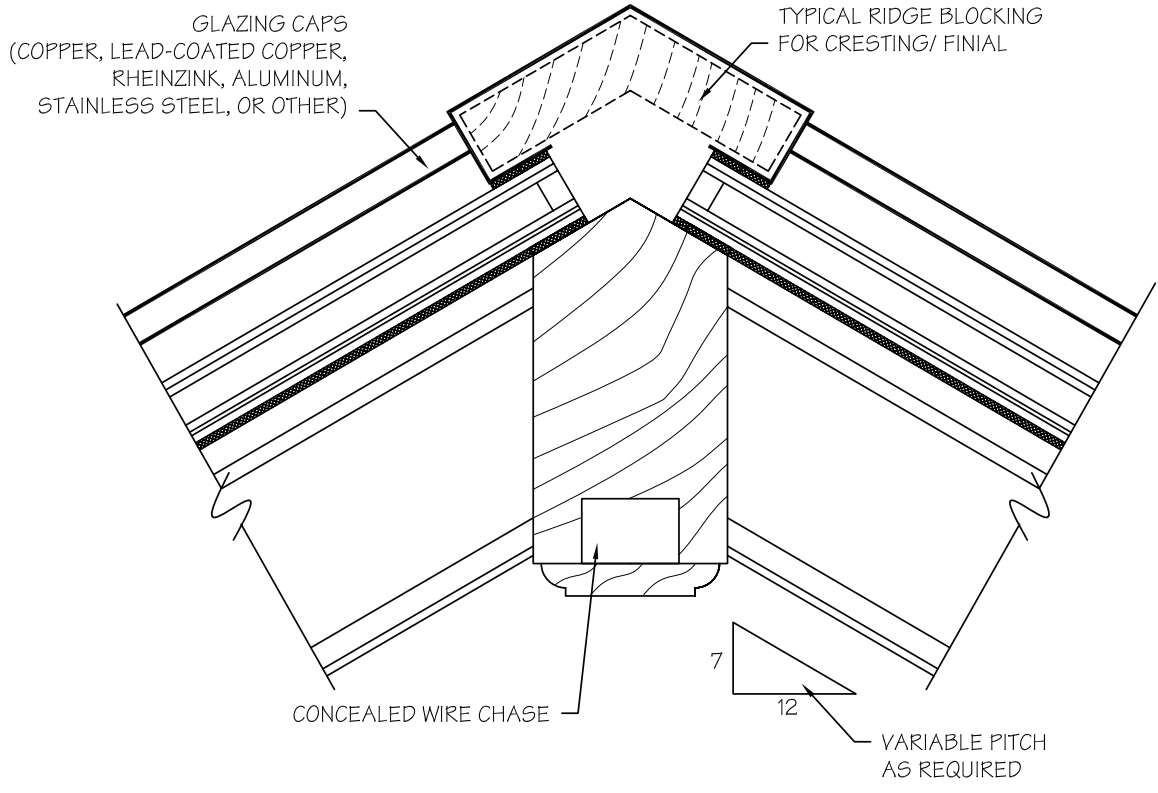
TYPICAL LANTERN
ARTICULATED EAVES

DRAWINGS AND DIMENSIONS ARE
FOR ILLUSTRATION PURPOSES ONLY, AND ARE
NOT FOR CONSTRUCTION.



132 Ashmore Drive
Leola, Pennsylvania 17540
(717) 661-7520 Fax (717) 661-7727

Scale: NTS	Page#: L4
Revision Date: 8-1-09	
File Name: Lantern Eaves 2	



TYPICAL LANTERN RIDGE DETAIL

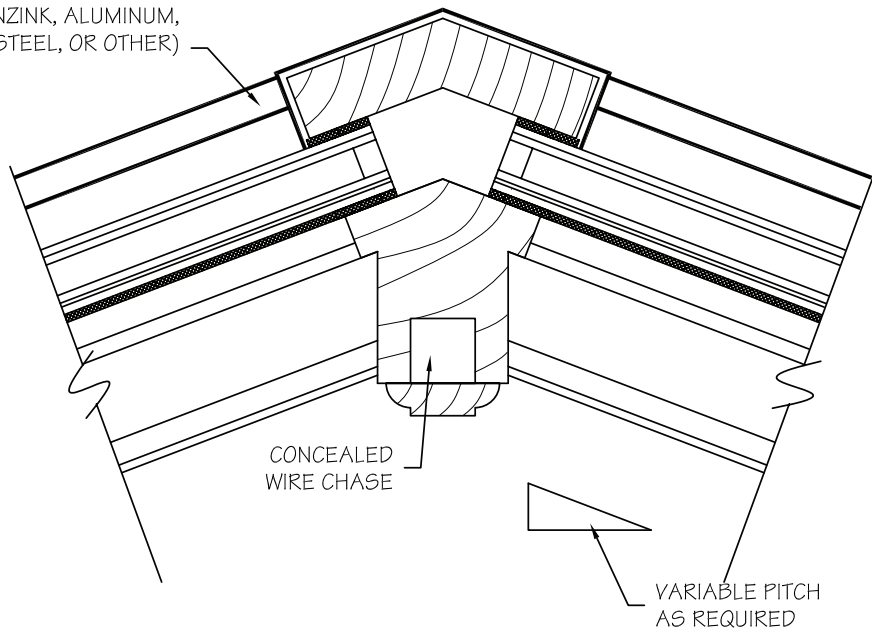
DRAWINGS AND DIMENSIONS ARE FOR ILLUSTRATION PURPOSES ONLY, AND ARE NOT FOR CONSTRUCTION.



132 Ashmore Drive
Leola, Pennsylvania 17540
(717) 661-7520 Fax (717) 661-7727

Scale: NTS	Page#: L5
Revision Date: 8-1-09	
File Name: Lantern Ridge	

GLAZING CAPS
(COPPER, LEAD-COATED COPPER,
RHEINZINK, ALUMINUM,
STAINLESS STEEL, OR OTHER)



TYPICAL LANTERN HIP

DRAWINGS AND DIMENSIONS ARE
FOR ILLUSTRATION PURPOSES ONLY, AND ARE
NOT FOR CONSTRUCTION.



132 Ashmore Drive
Leola, Pennsylvania 17540
(717) 661-7520 Fax (717) 661-7727

Scale: NTS

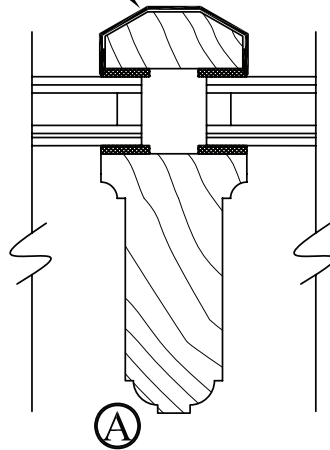
Revision Date: 8-1-09

File Name: Lantern Hip

Page#:

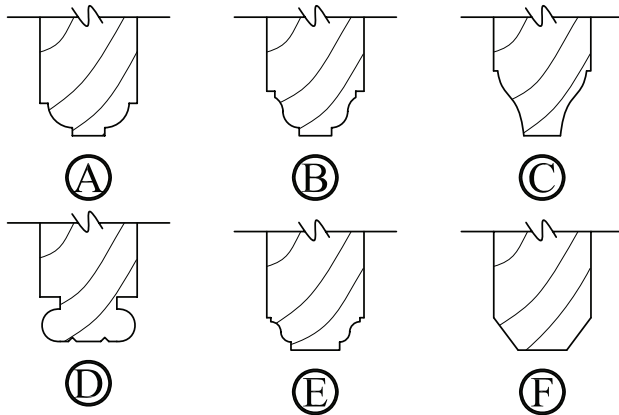
L6

GLAZING CAPS
 (COPPER, LEAD-COATED COPPER,
 RHEINZINK, ALUMINUM,
 STAINLESS STEEL, OR OTHER)



TYPICAL LANTERN RAFTER DETAIL

ALTERNATE RAFTER BOTTOM EDGE PROFILES

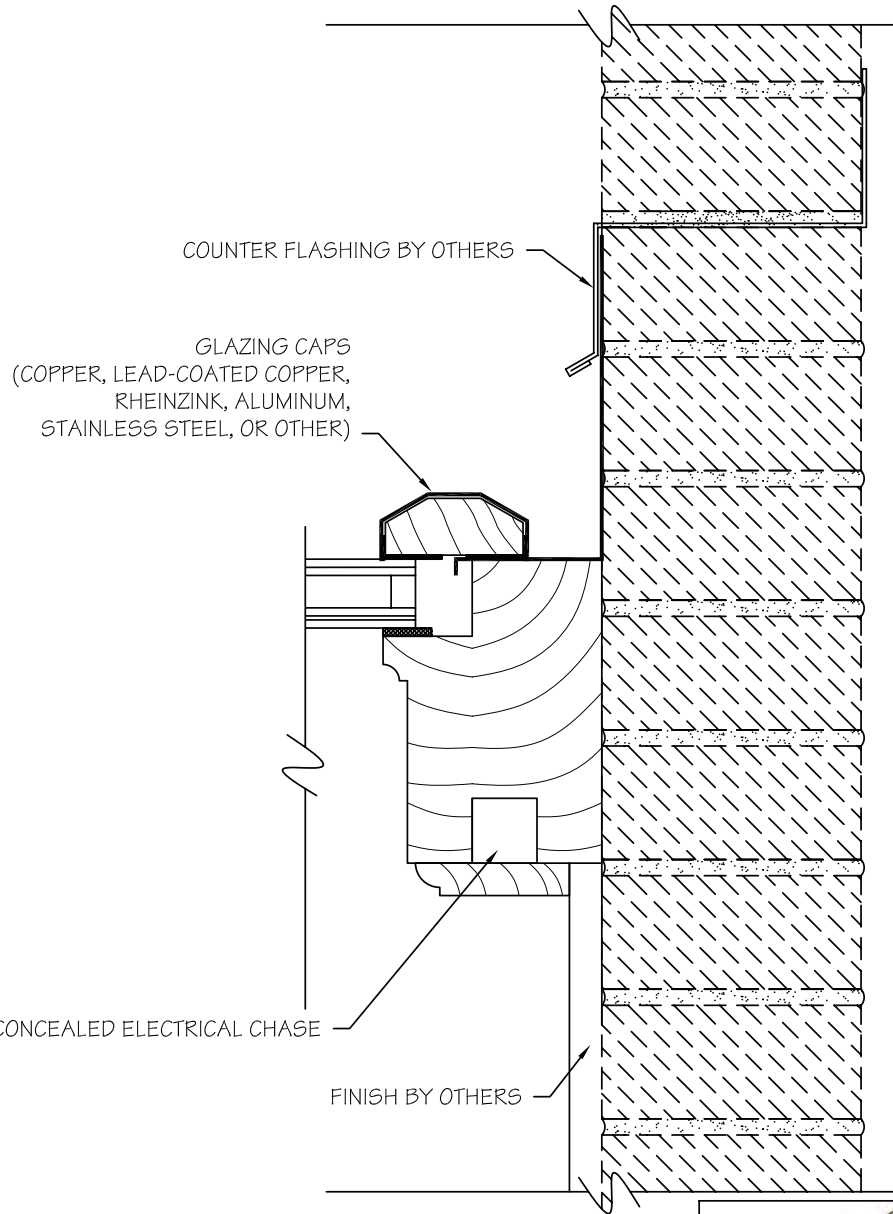


DRAWINGS AND DIMENSIONS ARE
 FOR ILLUSTRATION PURPOSES ONLY, AND ARE
 NOT FOR CONSTRUCTION.



132 Ashmore Drive
 Leola, Pennsylvania 17540
 (717) 661-7520 Fax (717) 661-7727

Scale: NTS	Page#: L7
Revision Date: 8-1-09	
File Name: Lantern Rafter	



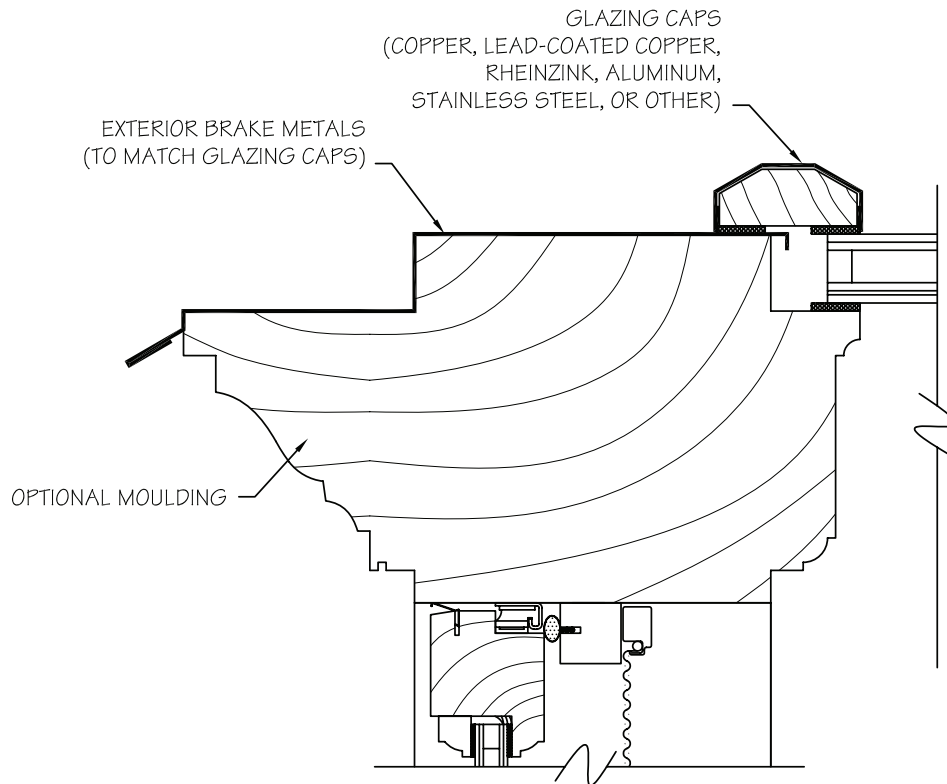
**TYPICAL LANTERN RAFTER
@ BUILDING WALL**

DRAWINGS AND DIMENSIONS ARE FOR ILLUSTRATION PURPOSES ONLY, AND ARE NOT FOR CONSTRUCTION.



132 Ashmore Drive
Leola, Pennsylvania 17540
(717) 661-7520 Fax (717) 661-7727

Scale: NTS	Page#: L8
Revision Date: 8-1-09	
File Name: Lantern Rafter 2	



TYPICAL LANTERN RAFTER
@ GABLE END

DRAWINGS AND DIMENSIONS ARE
FOR ILLUSTRATION PURPOSES ONLY, AND ARE
NOT FOR CONSTRUCTION.



132 Ashmore Drive
Leola, Pennsylvania 17540
(717) 661-7520 Fax (717) 661-7727

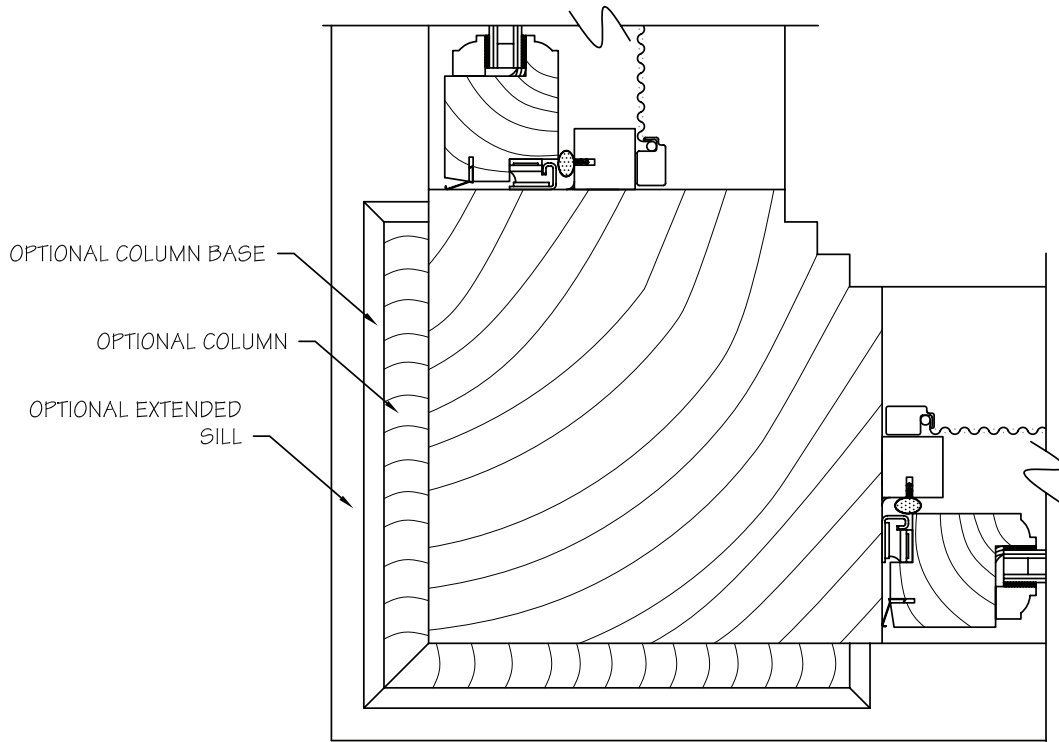
Scale: NTS

Page#:

Revision Date: 8-1-09

L9

File Name: Lantern Rake



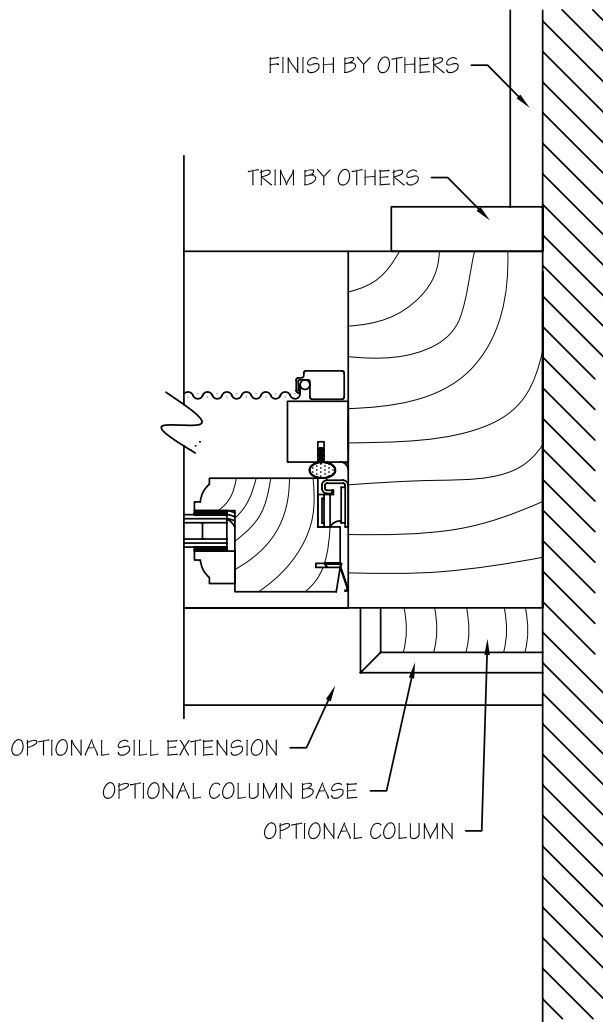
TYPICAL LANTERN CORNER DETAIL



132 Ashmore Drive
Leola, Pennsylvania 17540
(717) 661-7520 Fax (717) 661-7727

DRAWINGS AND DIMENSIONS ARE
FOR ILLUSTRATION PURPOSES ONLY, AND ARE
NOT FOR CONSTRUCTION.

Scale: NTS	Page#: L10
Revision Date: 8-1-09	
File Name: Lantern Corner	



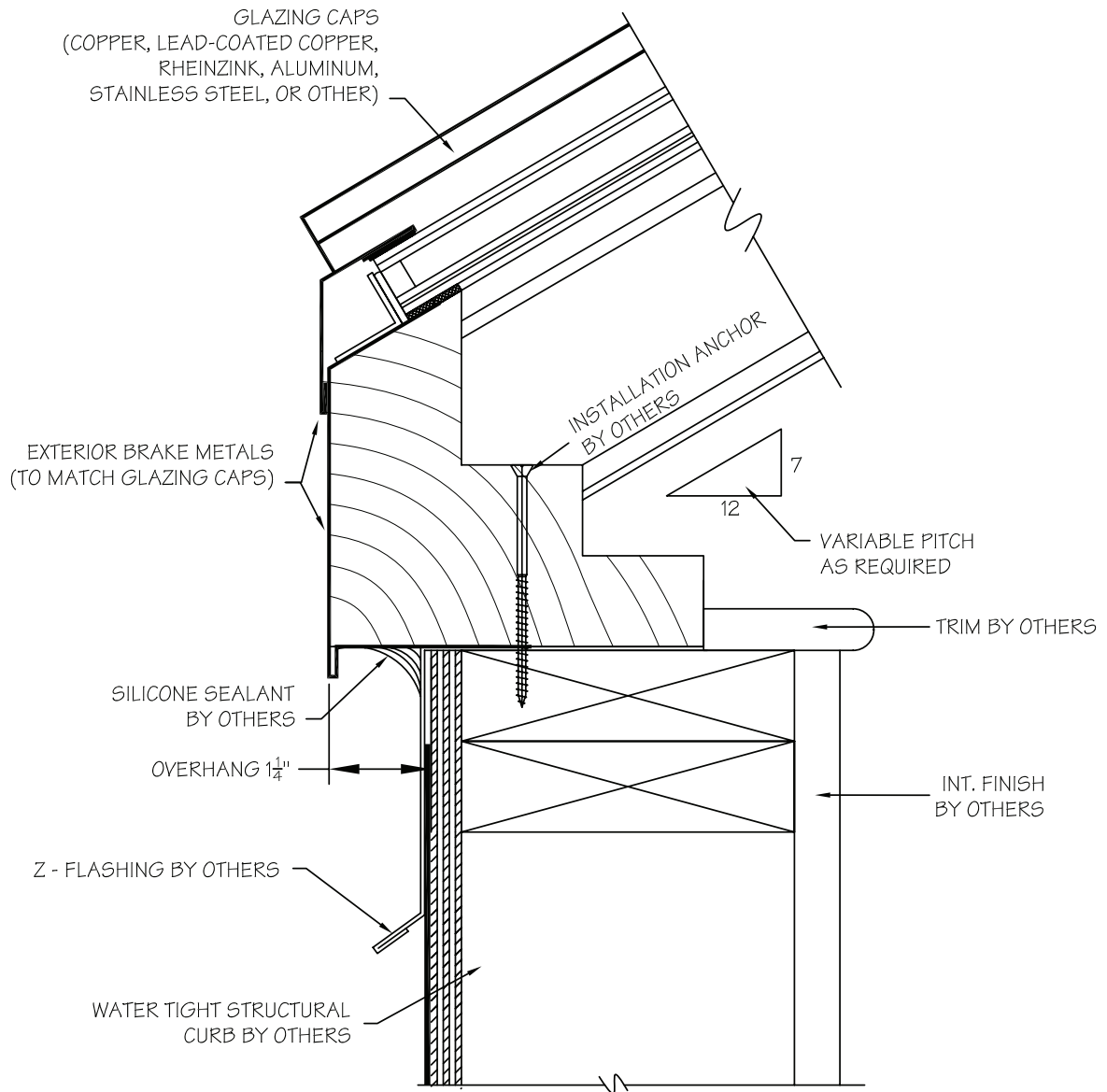
TYPICAL LANTERN CONNECTION
@ BUILDING WALL

DRAWINGS AND DIMENSIONS ARE
FOR ILLUSTRATION PURPOSES ONLY, AND ARE
NOT FOR CONSTRUCTION.



132 Ashmore Drive
Leola, Pennsylvania 17540
(717) 661-7520 Fax (717) 661-7727

Scale: NTS	Page#: L11
Revision Date: 8-1-09	
File Name: Lantern Connection	



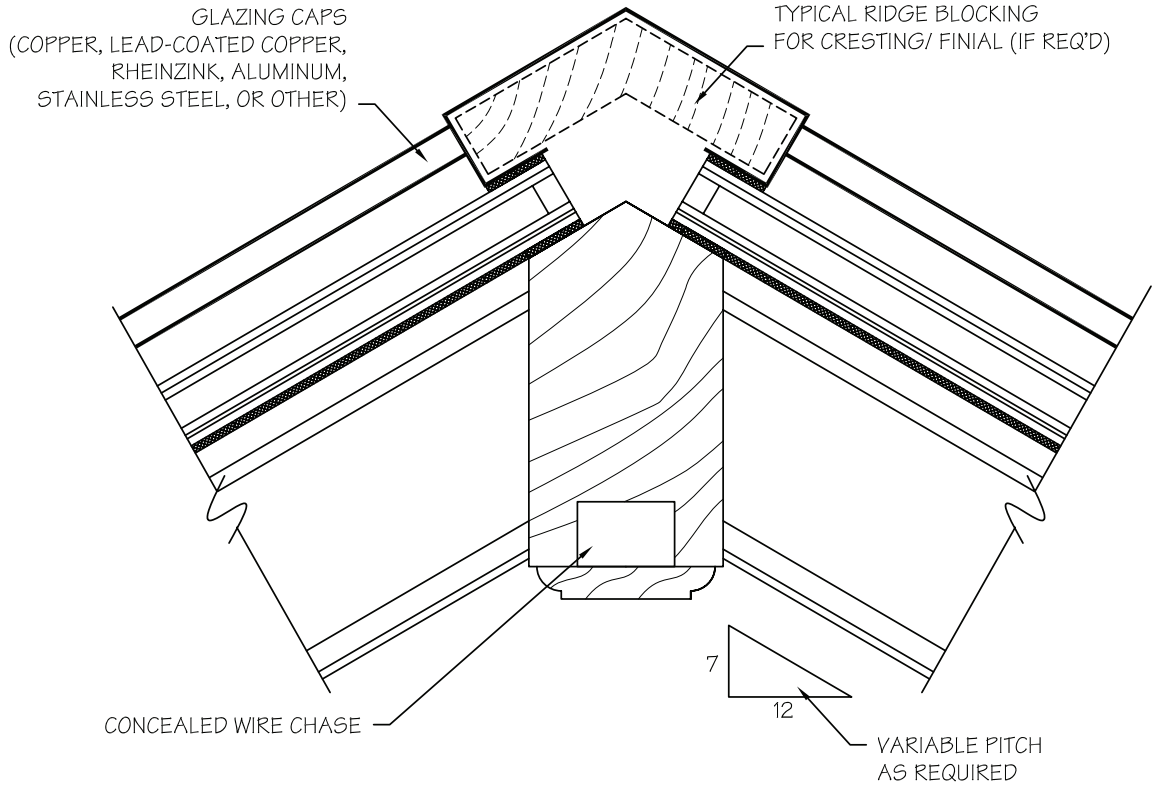
TYPICAL SKYLIGHT SILL-TO-CURB



132 Ashmore Drive
Leola, Pennsylvania 17540
(717) 661-7520 Fax (717) 661-7727

DRAWINGS AND DIMENSIONS ARE FOR ILLUSTRATION PURPOSES ONLY, AND ARE NOT FOR CONSTRUCTION.

Scale: NTS	Page#: S1
Revision Date: 8-1-09	
File Name: Skylight Sill	



TYPICAL SKYLIGHT RIDGE DETAIL

DRAWINGS AND DIMENSIONS ARE
FOR ILLUSTRATION PURPOSES ONLY, AND ARE
NOT FOR CONSTRUCTION.



132 Ashmore Drive
Leola, Pennsylvania 17540
(717) 661-7520 Fax (717) 661-7727

Scale: NTS

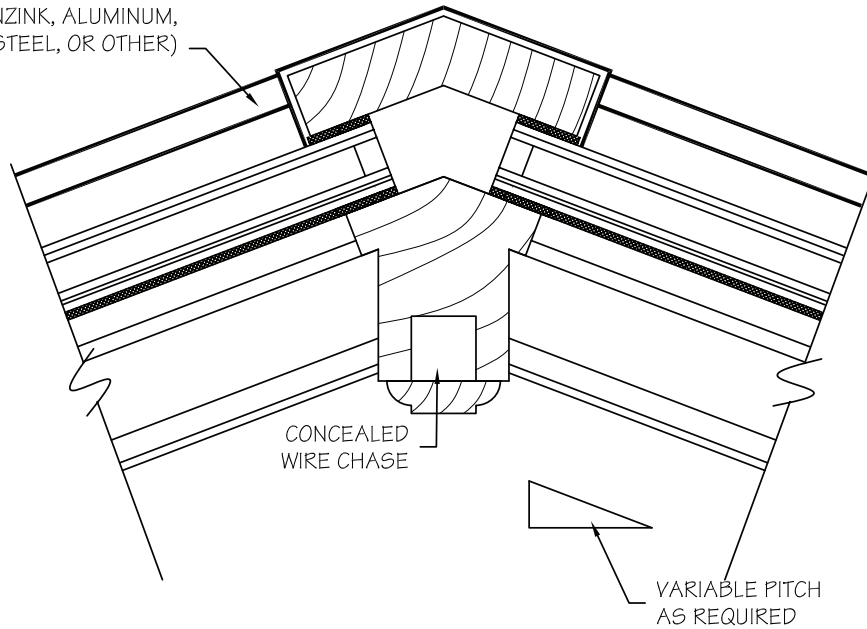
Page#:

Revision Date: 8-1-09

S2

File Name: Skylight Ridge

GLAZING CAPS
(COPPER, LEAD-COATED COPPER,
RHEINZINK, ALUMINUM,
STAINLESS STEEL, OR OTHER)



TYPICAL SKYLIGHT HIP

4

DETAILS



132 Ashmore Drive
Leola, Pennsylvania 17540
(717) 661-7520 Fax (717) 661-7727

DRAWINGS AND DIMENSIONS ARE
FOR ILLUSTRATION PURPOSES ONLY, AND ARE
NOT FOR CONSTRUCTION.

Scale: NTS

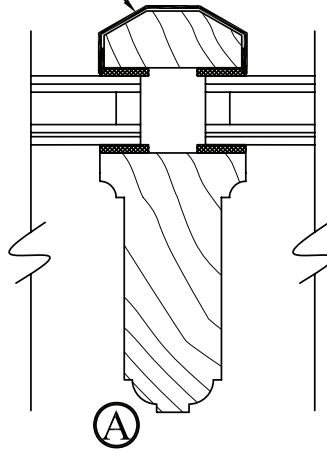
Page#:

Revision Date: 8-1-09

S3

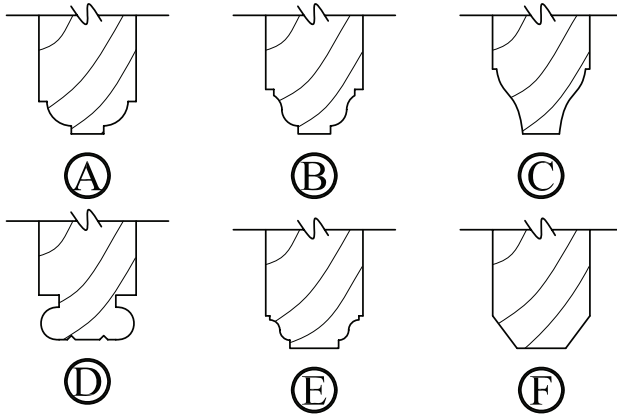
File Name: Lantern Hip

GLAZING CAPS
 (COPPER, LEAD-COATED COPPER,
 RHEINZINK, ALUMINUM,
 STAINLESS STEEL, OR OTHER)



TYPICAL SKYLIGHT RAFTER DETAIL

ALTERNATE RAFTER BOTTOM EDGE PROFILES



DRAWINGS AND DIMENSIONS ARE
 FOR ILLUSTRATION PURPOSES ONLY, AND ARE
NOT FOR CONSTRUCTION.



132 Ashmore Drive
 Leola, Pennsylvania 17540
 (717) 661-7520 Fax (717) 661-7727

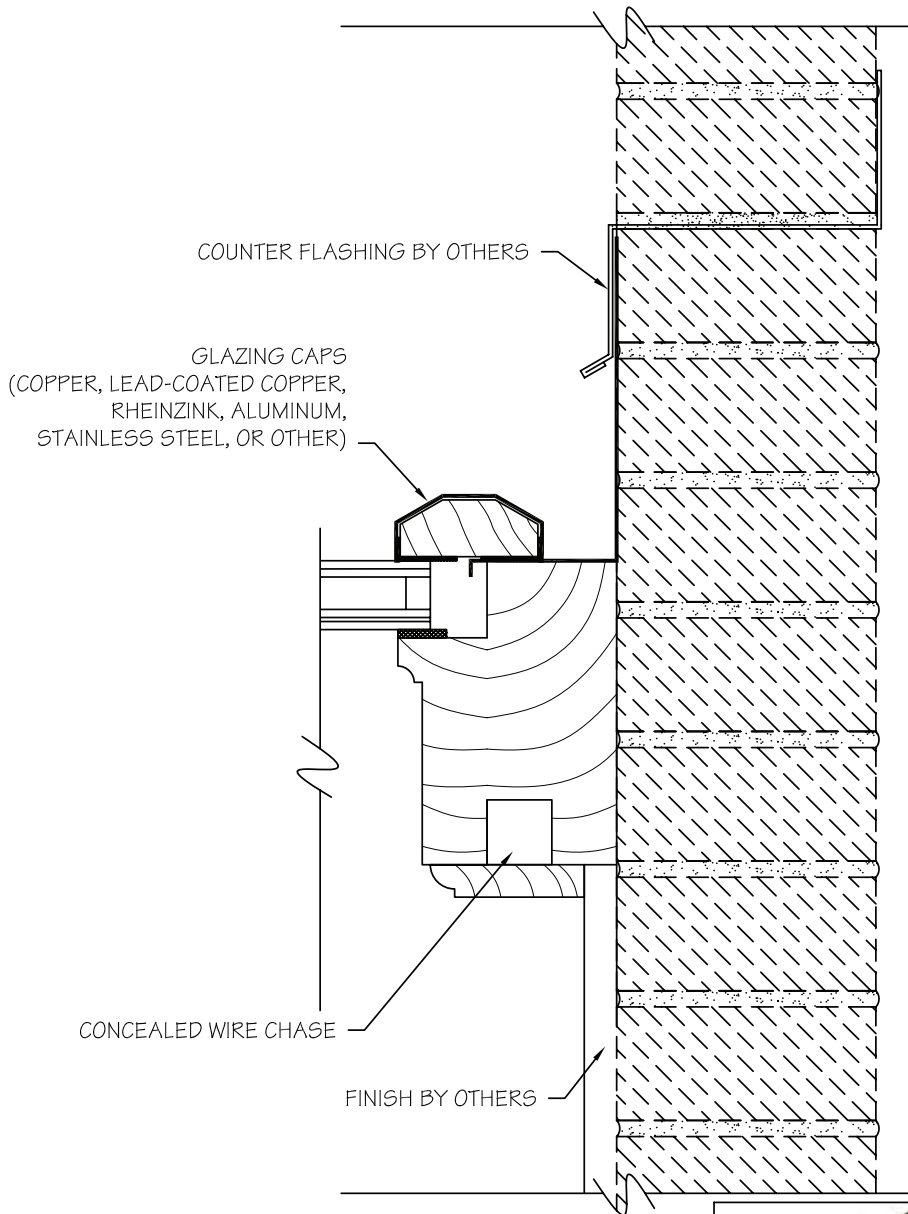
Scale: NTS

Page#:

Revision Date: 8-1-09

S4

File Name: Lantern Rafter



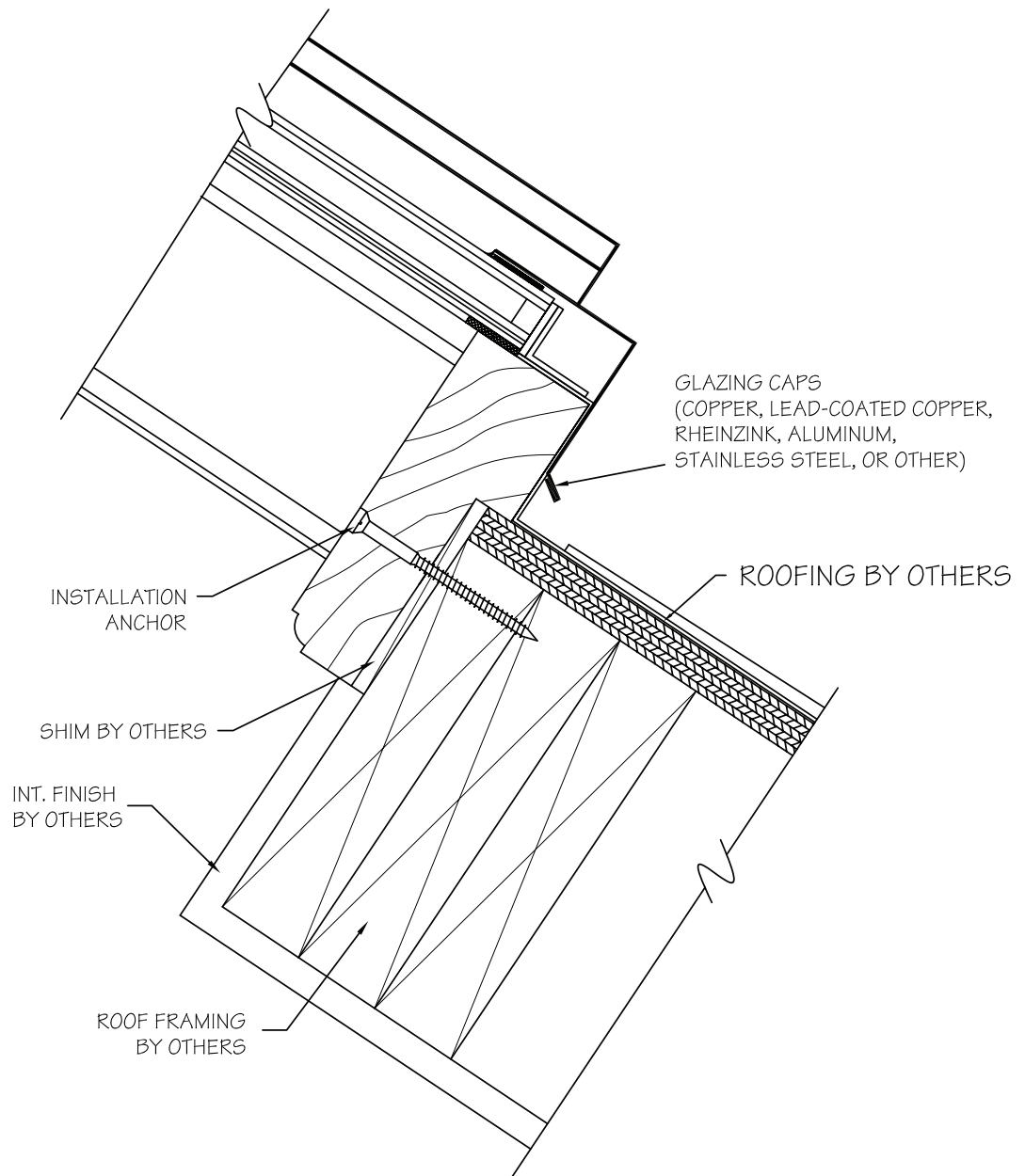
**TYPICAL SKYLIGHT RAFTER
@ BUILDING WALL**

DRAWINGS AND DIMENSIONS ARE
FOR ILLUSTRATION PURPOSES ONLY, AND ARE
NOT FOR CONSTRUCTION.



132 Ashmore Drive
Leola, Pennsylvania 17540
(717) 661-7520 Fax (717) 661-7727

Scale: NTS	Page#: S5
Revision Date: 8-1-09	
File Name: Skylight Rafter 2	



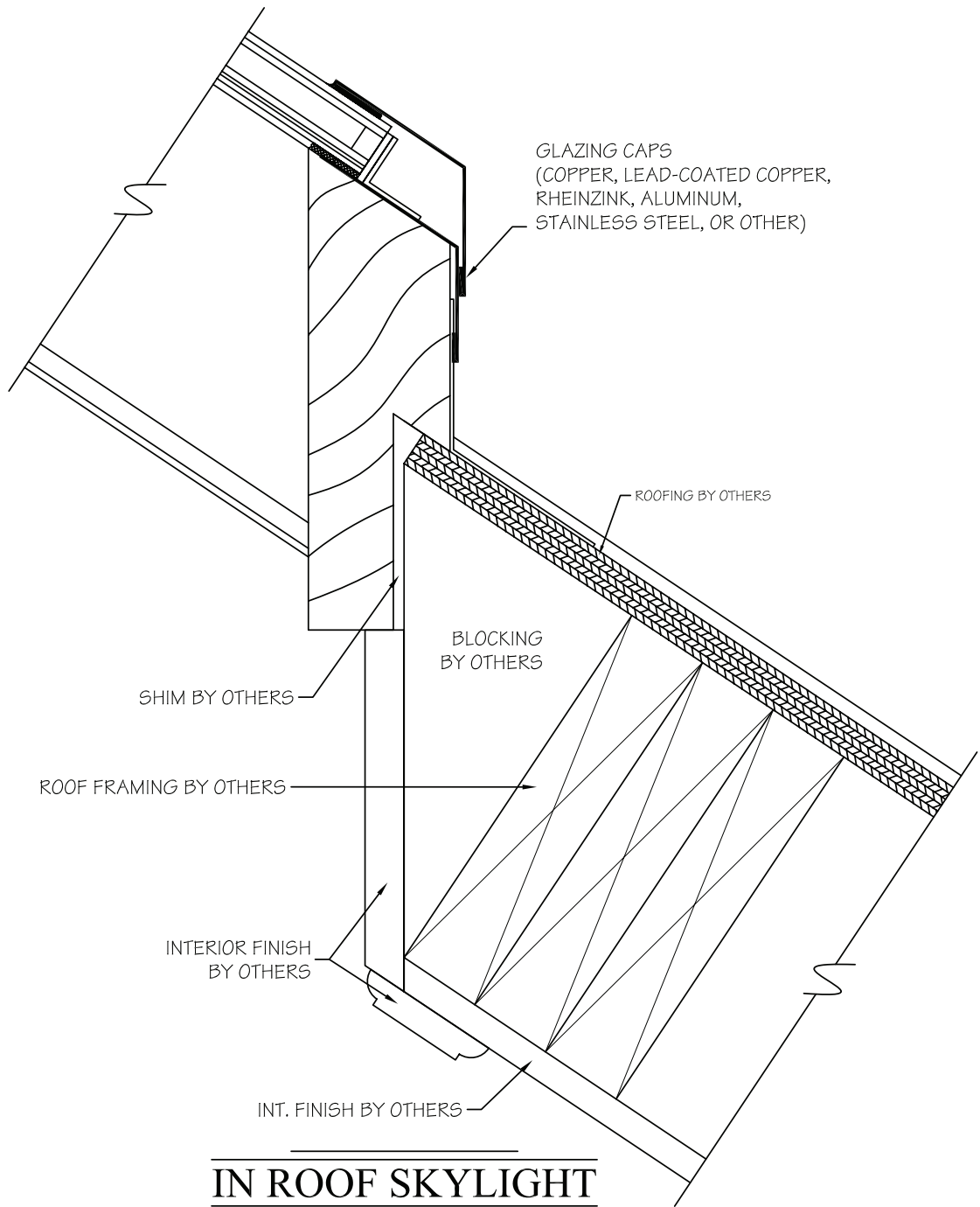
**IN ROOF SKYLIGHT
SILL DETAIL**

DRAWINGS AND DIMENSIONS ARE
FOR ILLUSTRATION PURPOSES ONLY, AND ARE
NOT FOR CONSTRUCTION.



132 Ashmore Drive
Leola, Pennsylvania 17540
(717) 661-7520 Fax (717) 661-7727

Scale: NTS	Page#: S6A
Revision Date: 8-1-09	
File Name: In Roof Skylight Sill	



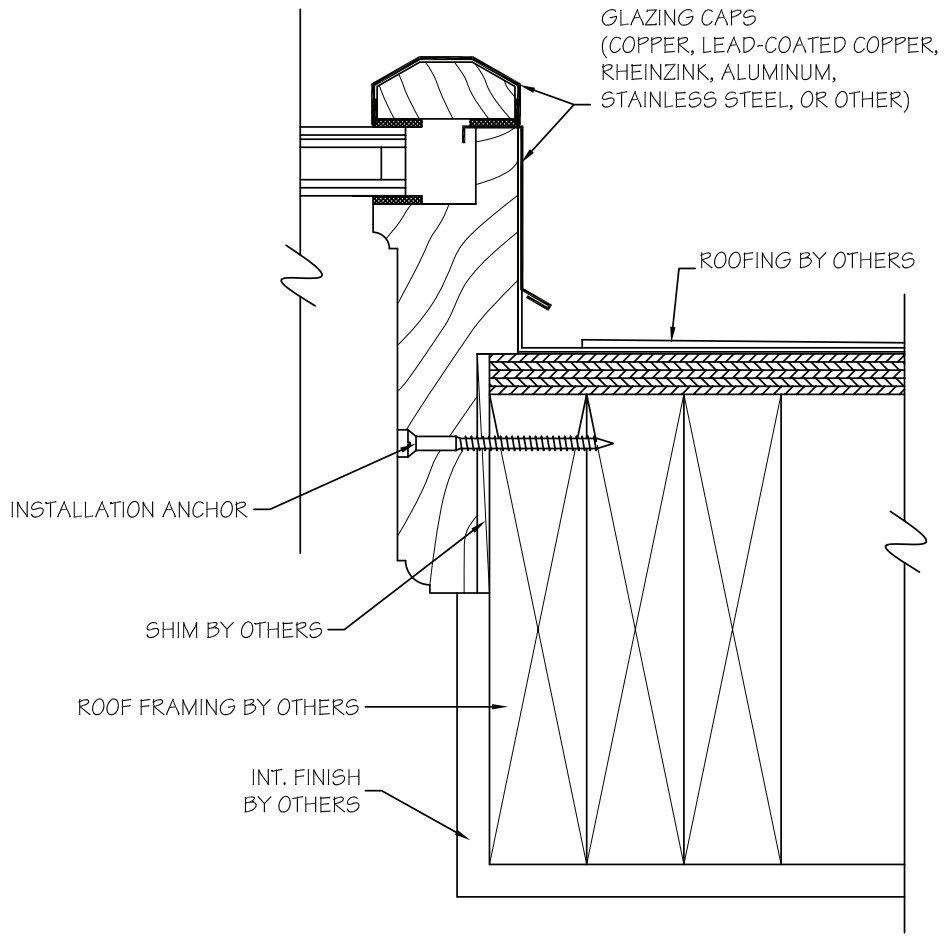
**IN ROOF SKYLIGHT
SILL DETAIL**

DRAWINGS AND DIMENSIONS ARE
FOR ILLUSTRATION PURPOSES ONLY, AND ARE
NOT FOR CONSTRUCTION.



132 Ashmore Drive
Leola, Pennsylvania 17540
(717) 661-7520 Fax (717) 661-7727

Scale: NTS	Page#: S6B
Revision Date: 8-1-09	
File Name: In Roof Skylight Sill	



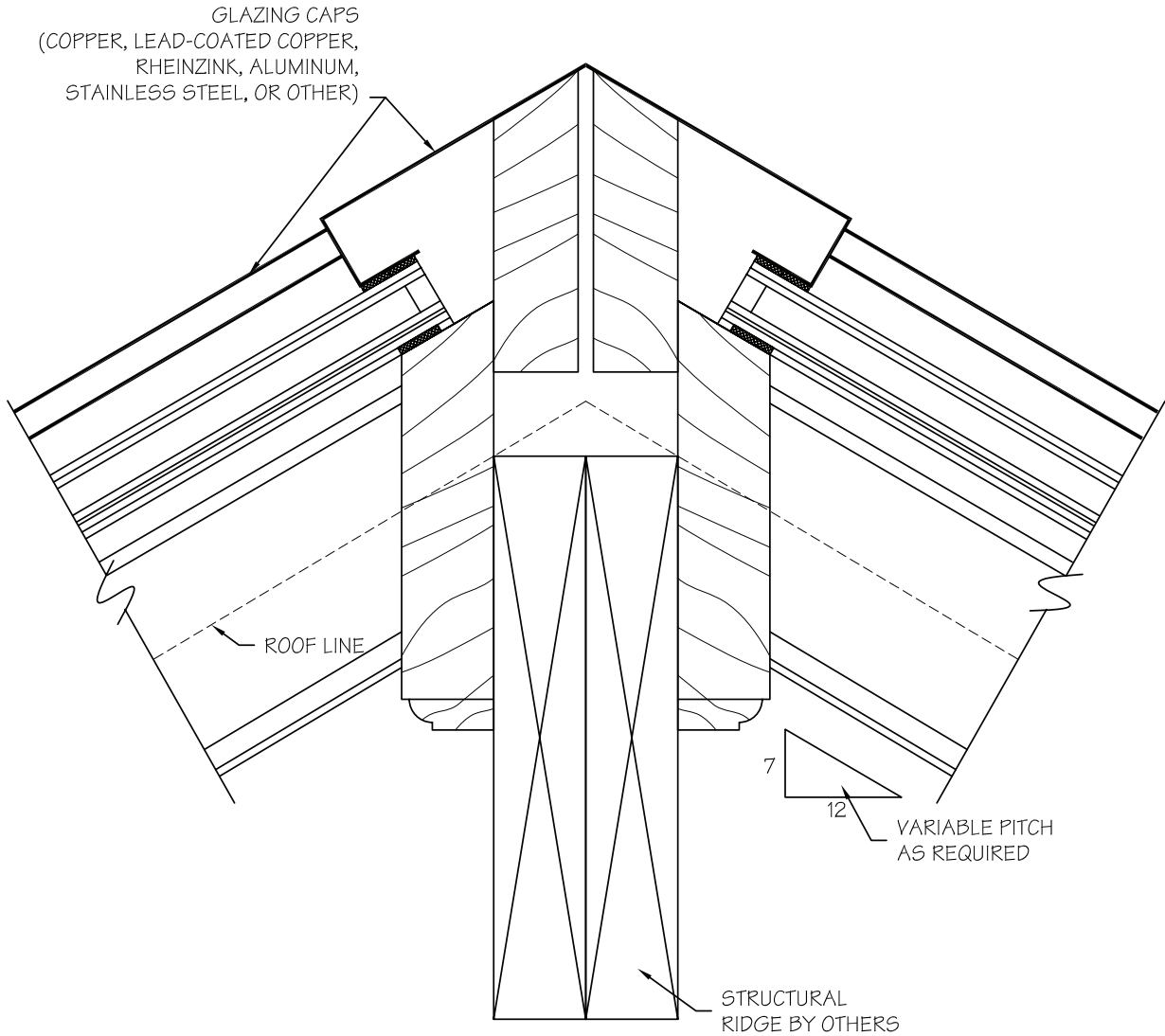
IN ROOF SKYLIGHT
SIDE DETAIL

DRAWINGS AND DIMENSIONS ARE
FOR ILLUSTRATION PURPOSES ONLY, AND ARE
NOT FOR CONSTRUCTION.



132 Ashmore Drive
Leola, Pennsylvania 17540
(717) 661-7520 Fax (717) 661-7727

Scale: NTS	Page#: S7
Revision Date: 8-1-09	
File Name: In Roof Skylight Detail	



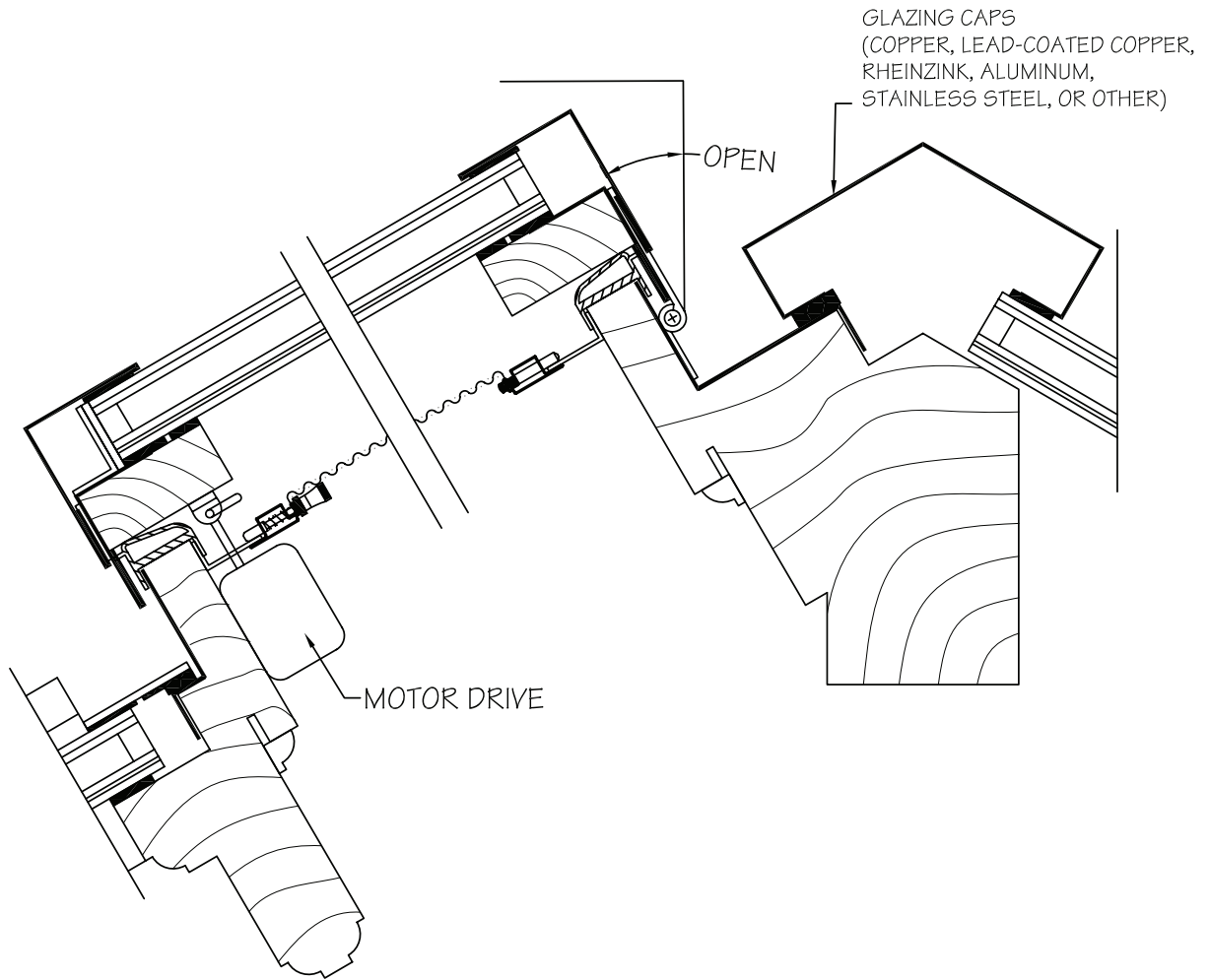
IN ROOF SKYLIGHT RIDGE DETAIL

DRAWINGS AND DIMENSIONS ARE
FOR ILLUSTRATION PURPOSES ONLY, AND ARE
NOT FOR CONSTRUCTION.



132 Ashmore Drive
Leola, Pennsylvania 17540
(717) 661-7520 Fax (717) 661-7727

Scale: NTS	Page#: S8
Revision Date: 8-1-09	
File Name: Skylight Ridge	



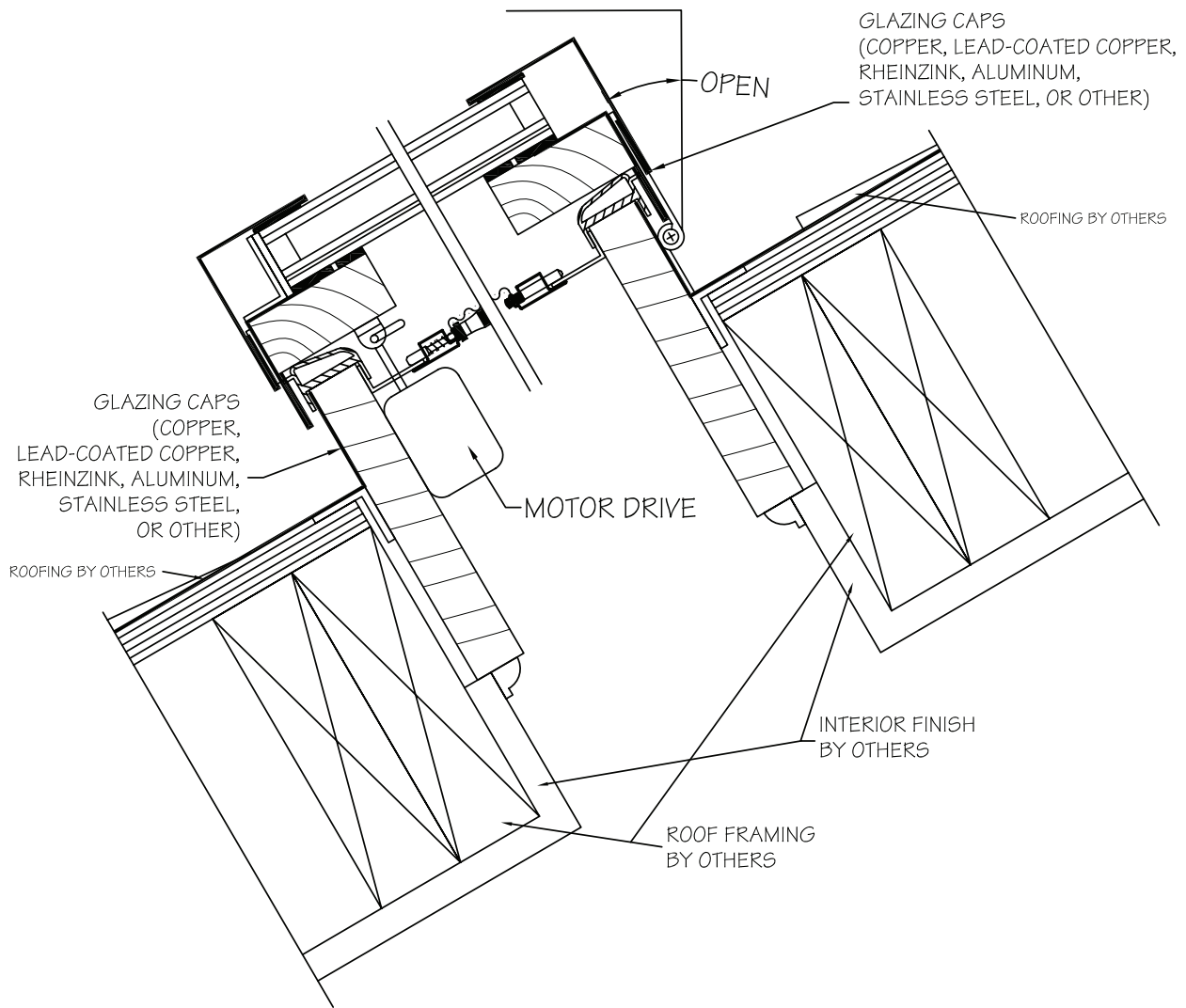
OPERABLE SKYLIGHT DETAIL

DRAWINGS AND DIMENSIONS ARE
FOR ILLUSTRATION PURPOSES ONLY, AND ARE
NOT FOR CONSTRUCTION.



132 Ashmore Drive
Leola, Pennsylvania 17540
(717) 661-7520 Fax (717) 661-7727

Scale: NTS	Page#: S9
Revision Date: 8-1-09	
File Name: Operable Skylight	



OPERABLE IN-ROOF SKYLIGHT DETAIL

DRAWINGS AND DIMENSIONS ARE
FOR ILLUSTRATION PURPOSES ONLY, AND ARE
NOT FOR CONSTRUCTION.



132 Ashmore Drive
Leola, Pennsylvania 17540
(717) 661-7520 Fax (717) 661-7727

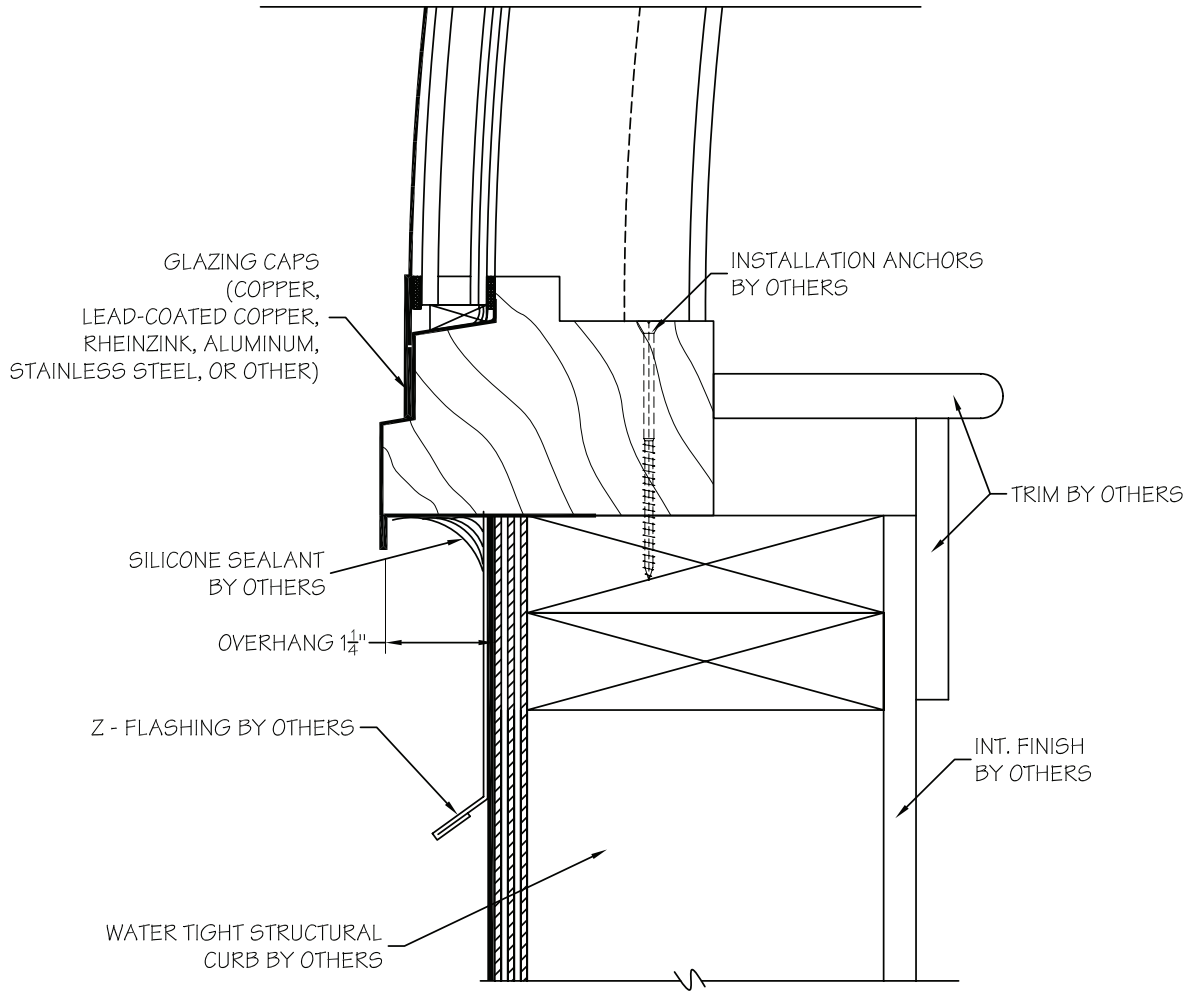
Scale: NTS

Page#:

Revision Date: 8-1-09

S10

File Name: In-Roof Operable Skylight



DOMES SILL DETAIL

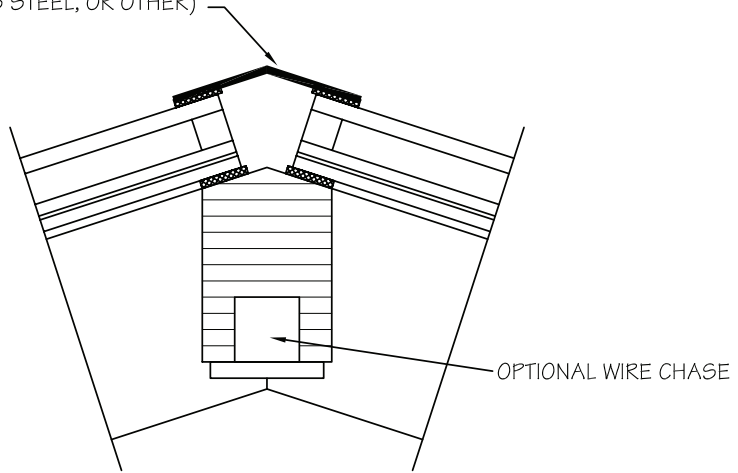
DRAWINGS AND DIMENSIONS ARE
FOR ILLUSTRATION PURPOSES ONLY, AND ARE
NOT FOR CONSTRUCTION.



132 Ashmore Drive
Leola, Pennsylvania 17540
(717) 661-7520 Fax (717) 661-7727

Scale: NTS	Page#: D1
Revision Date: 8-1-09	
File Name: Dome Sill	

GLAZING CAPS
(COPPER, LEAD-COATED COPPER,
RHEINZINK, ALUMINUM,
STAINLESS STEEL, OR OTHER)



DOME RAFTER DETAIL

DRAWINGS AND DIMENSIONS ARE
FOR ILLUSTRATION PURPOSES ONLY, AND ARE
NOT FOR CONSTRUCTION.



132 Ashmore Drive
Leola, Pennsylvania 17540
(717) 661-7520 Fax (717) 661-7727

Scale: NTS	Page#: D2
Revision Date: 8-1-09	
File Name: Dome Rafter	



RENAISSANCE CONSERVATORIES SKYLIGHT INSTALLATION GUIDE

Follow these simple instructions

Advantages of a Renaissance Skylight

Every Renaissance Skylight is delivered fully glazed and finished. A crane may be necessary to lift your skylight into place. Please coordinate your project, so that a crane will be on site during the day and time of delivery. On the day of installation, the crane should be at the site 30 minutes prior to the Skylight's arrival. A small team of 2-3 carpenters should be onsite to install the Skylight. The contractor will need to have access to both the exterior and the interior of the skylight during the installation.

Designed for easy installation

Your skylight will be delivered with either One (1) or Two (2) eyebolts located at either the peak, or along the ridge of the skylight. When your skylight arrives on a flat-bed truck, simply attach the crane cable to the eyebolt and lift into place.

Note: Renaissance Conservatories will provide an I-Beam Steel Spreader Bar, to facilitate lifting the Skylight, or Lantern into place for a nominal fee, unless the Contractor would prefer for the Crane operator to provide one.



Preparing the curb

Your skylight is designed to overhang the roof curb 1 3/16", unless specified differently on the shop drawings. Please refer to the curb detail (construction and flashings) located on the set of shop drawings provided by Renaissance Conservatories.



Finishing

Once the crane has lifted the Skylight into place, and the eye-bolts have been removed, seal over and cover the eye-bolt with the provided metal cap. Renaissance Conservatories will provide anchors and matching wood plugs, to attach the skylight.

RENAISSANCE CONSERVATORIES
LANTERN, SKYLIGHT, GLASS ROOF & DOME WARRANTY

Effective 9/1/2009

(a) GENERAL DISCLAIMER-

UNLESS OTHERWISE AGREED TO BY RENAISSANCE CONSERVATORIES IN WRITING, RENAISSANCE CONSERVATORIES MAKES NO WARRANTIES, EXPRESS OR IMPLIED, INCLUDING, BUT NOT LIMITED TO IMPLIED WARRANTIES OF MERCHANTABILITY OR FITNESS FOR A PARTICULAR PURPOSE. IN NO EVENT SHALL RENAISSANCE CONSERVATORIES BE LIABLE TO THE CUSTOMER FOR SPECIAL, DIRECT, INDIRECT, INCIDENTAL, OR CONSEQUENTIAL DAMAGES.

(b) GLASS WARRANTY-

Insulating glass panels are warranted to the CUSTOMER, (end-user), to be free from material obstruction of vision as a result of dust or film formation on its internal glass surfaces caused by failure of the hermetic edge seal due to faulty manufacturing of the unit for a period of ten (10) years from the date of manufacture in accordance with the following conditions and limitations:

- (1) This warranty is valid to the original CUSTOMER (end-user) and is transferable to any subsequent owners.
- (2) The Lantern or Skylight must be installed in strict accordance with RENAISSANCE CONSERVATORIES' recommended installation instructions, drawings and/or details without exception, including the use of adequate fasteners.
- (3) Factory-supplied sealants and flashing must be used exclusively.
- (4) The Lantern or Skylight can be part of an enclosure hot tub, spa, swimming pool, pond, or any other source of unusually high humidity.
- (5) Structural movement of any type will make this warranty null and void.
- (6) RENAISSANCE CONSERVATORIES assumes no responsibility for glass breakage, water leakage, condensation, improper usage, or failure of the insulating glass on account of faulty installation, faulty building construction, faulty design, improper handling, improper storage, or failure to follow RENAISSANCE CONSERVATORIES' instructions regarding installation.
- (7) RENAISSANCE CONSERVATORIES' sole responsibility is to replace the failed insulating glass, F.O.B. Leola, Pennsylvania, and includes no other expense, such as labor costs of any kind. The CUSTOMER'S exclusive remedy, in lieu of all incidental, special, or consequential damages including the case of negligence is limited to furnishing of another insulating glass unit as heretofore described in accordance with the following schedule:
Year 1 through Year 10: RENAISSANCE CONSERVATORIES will supply replacement glass to Customer at no cost F.O.B. Leola, Pennsylvania.
- (8) In each and every case where a replacement insulating glass unit is supplied, the warranty on said unit will extend only for the balance of the original ten (10) year period.

(c) FRAMES & SASH WARRANTY -

Unless otherwise stated in the specifications, RENAISSANCE CONSERVATORIES warrants the wood frames and wood sash to be manufactured in accordance with the dimensions and specifications supplied by the CUSTOMER on the Approved Shop Drawings, and to be free from defects in materials and workmanship in accordance with the following conditions and limitations:

- (1) RENAISSANCE CONSERVATORIES warrants any laminated sash to meet or exceed industry standards and warrants against bowing and warp for a period of two (2) years from the date of manufacture, and against de-lamination for a period of five (5) years from the date of manufacture.
- (2) This warranty is valid to the original CUSTOMER (end-user), and is transferable to any subsequent owners.
- (3) It is the CUSTOMER'S sole responsibility to properly apply and maintain an acceptable and effective seal and finish on the sash and the Lantern or Skylight frames in accordance with RENAISSANCE CONSERVATORIES' recommended "Final Finishing Instructions" which are prominently depicted on the Drawings, and/or attached to the product at the time of sale, attached to this Warranty, and online at www.renaissanceconservatories.com.
- (4) Wood is subject to random variations in grain, texture, color, and other variations which are beyond the control of RENAISSANCE CONSERVATORIES, and these normal naturally-occurring variations are not defects, and are specifically excluded from any warranty coverage.
- (5) Bow or warp shall not be considered a defect unless it exceeds 1/4" in the plane of the sash.
- (6) Claims due to bowing or warp may be deferred for up to nine (9) months from date of claim in order to allow for conditioning and equalizing to humidity and temperature conditions.
- (7) RENAISSANCE CONSERVATORIES agrees to either replace, or at RENAISSANCE CONSERVATORIES' sole discretion, repair defective materials and/or workmanship.
- (8) RENAISSANCE CONSERVATORIES will not participate in or be responsible for any liability for any incidental, special, or consequential damages resulting from bowing or warp, de-lamination, or defects of any kind, and the CUSTOMER'S exclusive remedy is limited to furnishing replacement materials in the condition the materials were originally provided, and under no circumstances includes installation labor.

(d) HARDWARE WARRANTIES -

Sash operators and locks (excluding motors) are warranted by the hardware manufacturer's limited lifetime warranty, a copy of which is available on request. Additional products provided by RENAISSANCE CONSERVATORIES carry the manufacturers' pass-through warranties, copies of which are available on request.

CUSTOMER _____ Job No. _____ - _____ Date of Manufacture ____/____/____ Dwg. No. _____